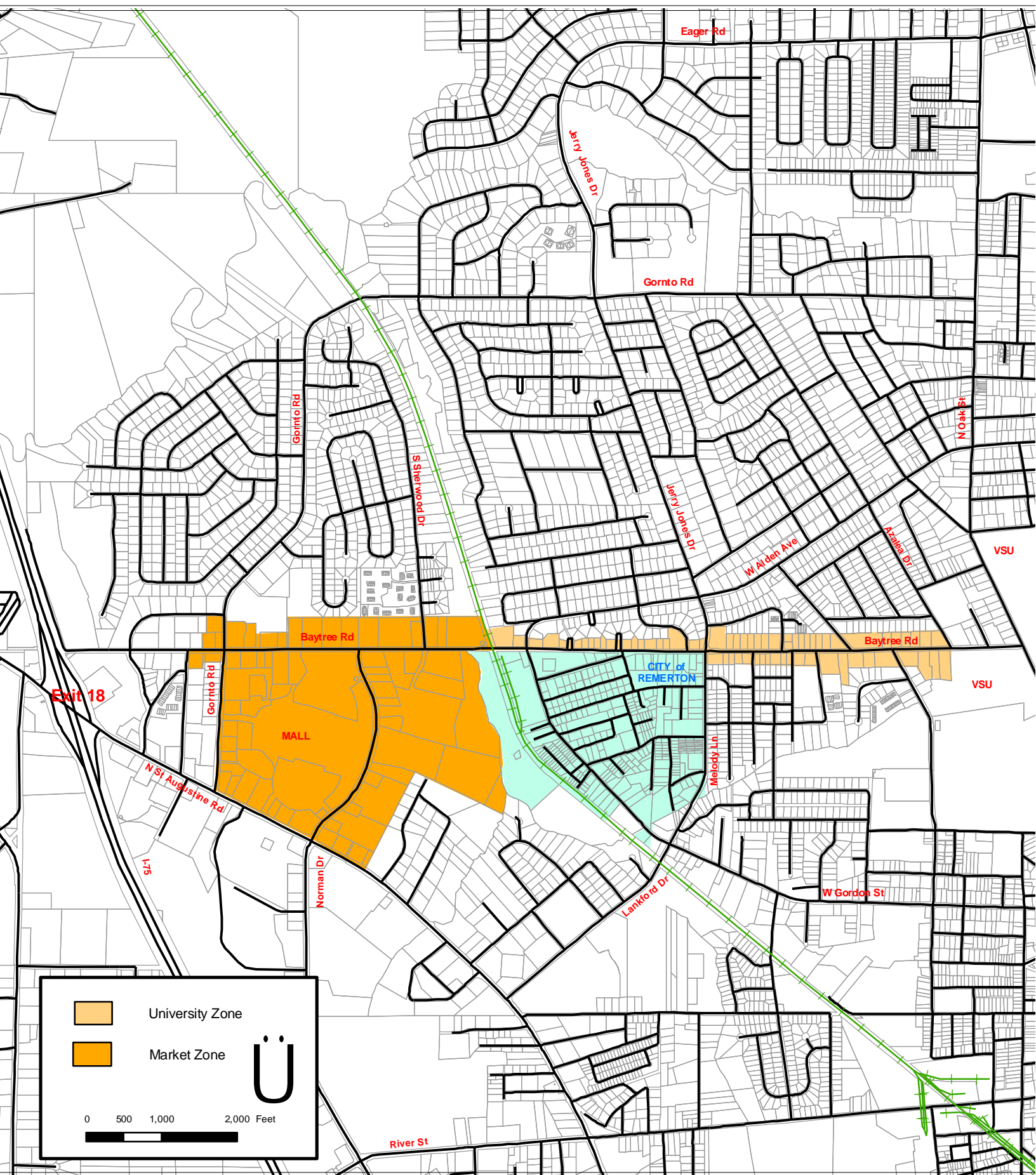
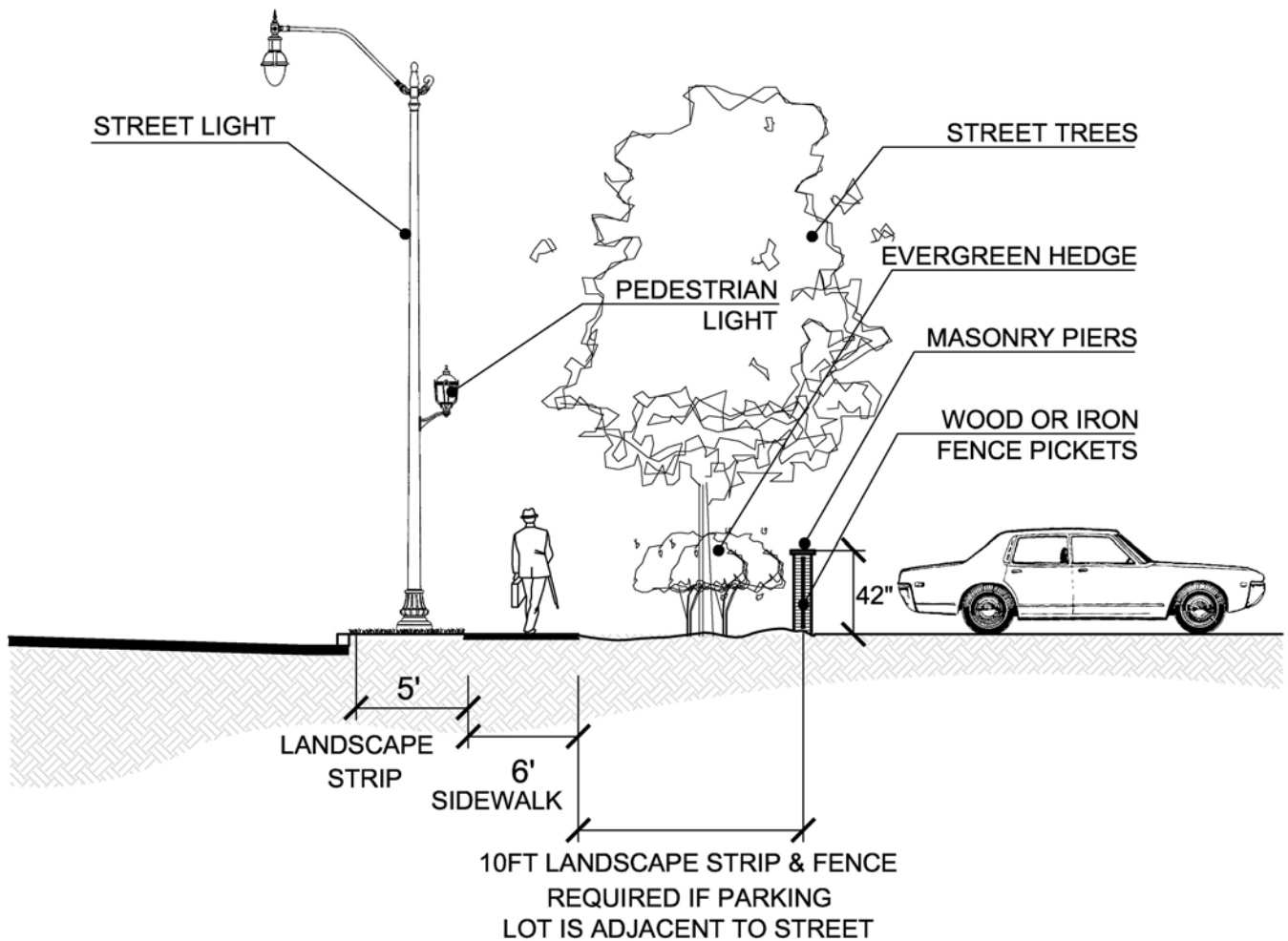


City of Valdosta Land Development Regulations

Appendix D – Design Guidelines for the Baytree-University Corridor Overlay District

Baytree - University Corridor Overlay District





LANDSCAPE STRIP IN MARKET ZONE

DESIGN GUIDELINES FOR:
BAYTREE-UNIVERSITY OVERLAY
 CITY OF VALDOSTA, GEORGIA

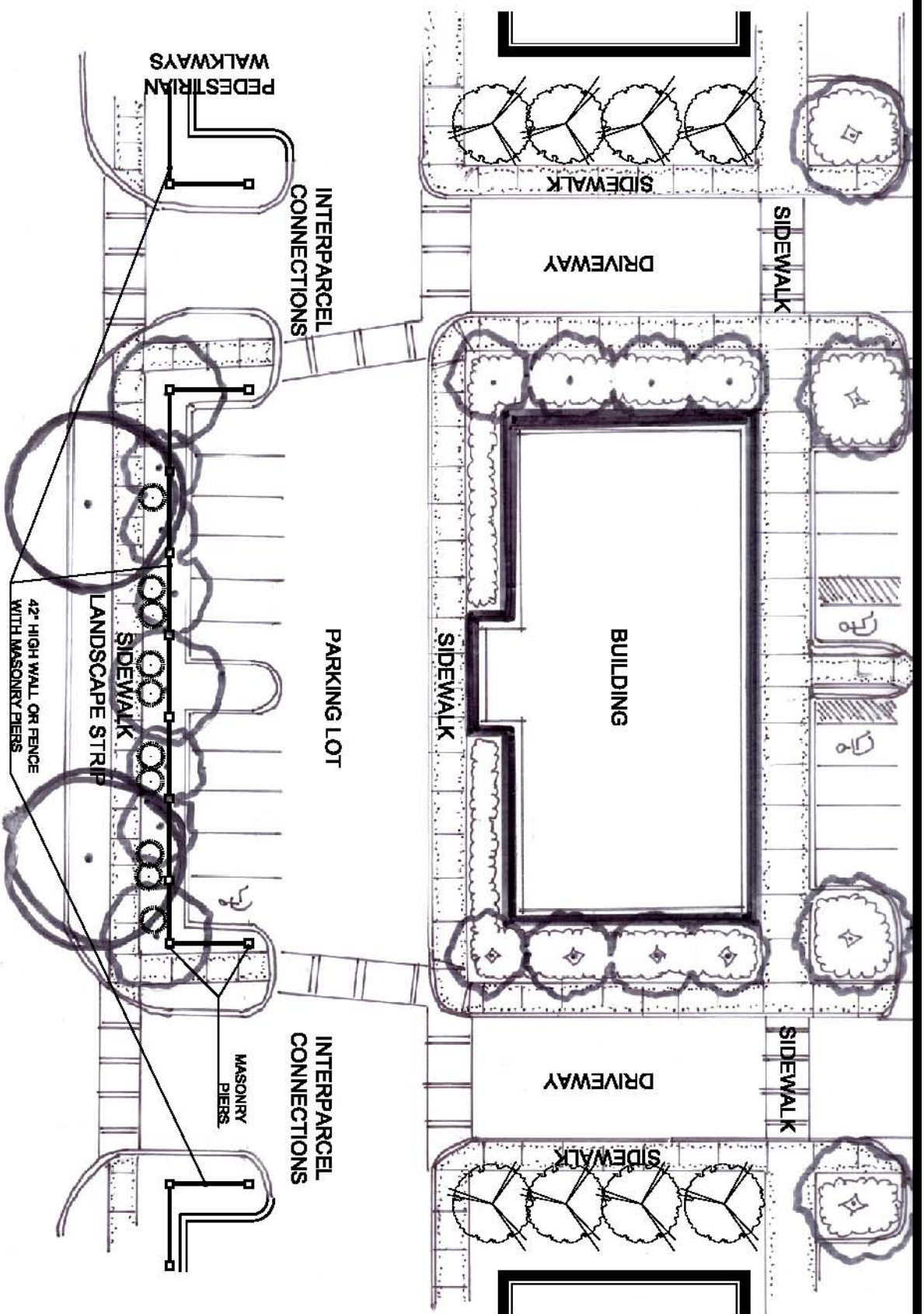


FEBRUARY 5, 2008

PREPARED BY:
 JORDAN, JONES & GOULDING

FIGURE

2



PEDESTRIAN CIRCULATION IN MARKET ZONE

DESIGN GUIDELINES FOR:

BAYTREE-UNIVERSITY OVERLAY

CITY OF VALDOSTA, GEORGIA

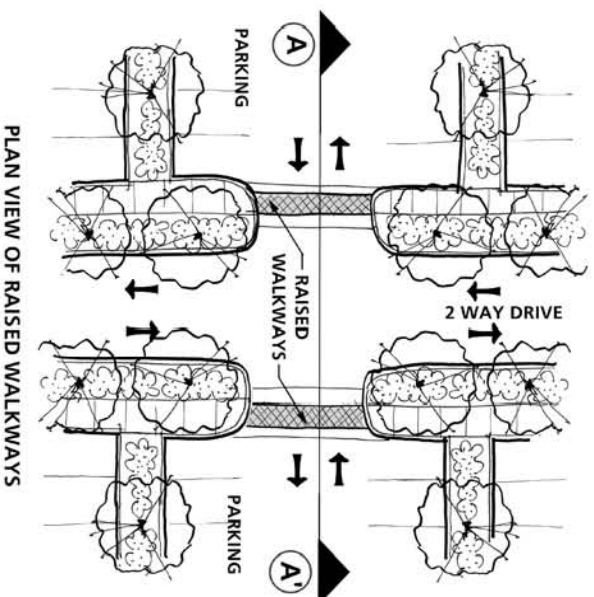
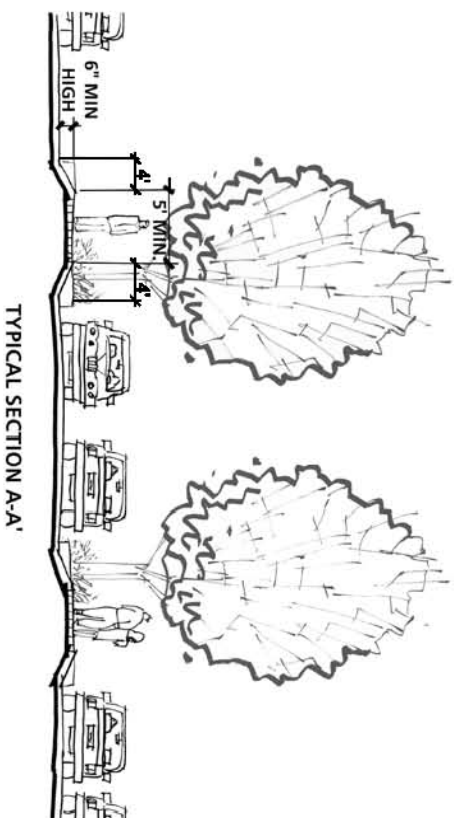


FEBRUARY 5, 2008

PREPARED BY:
JORDAN, JONES & GOULDING

FIGURE

3



DESIGNATED PEDESTRIAN PATHWAYS

DESIGN GUIDELINES FOR:

BAYTREE-UNIVERSITY OVERLAY

CITY OF VALDOSTA, GEORGIA

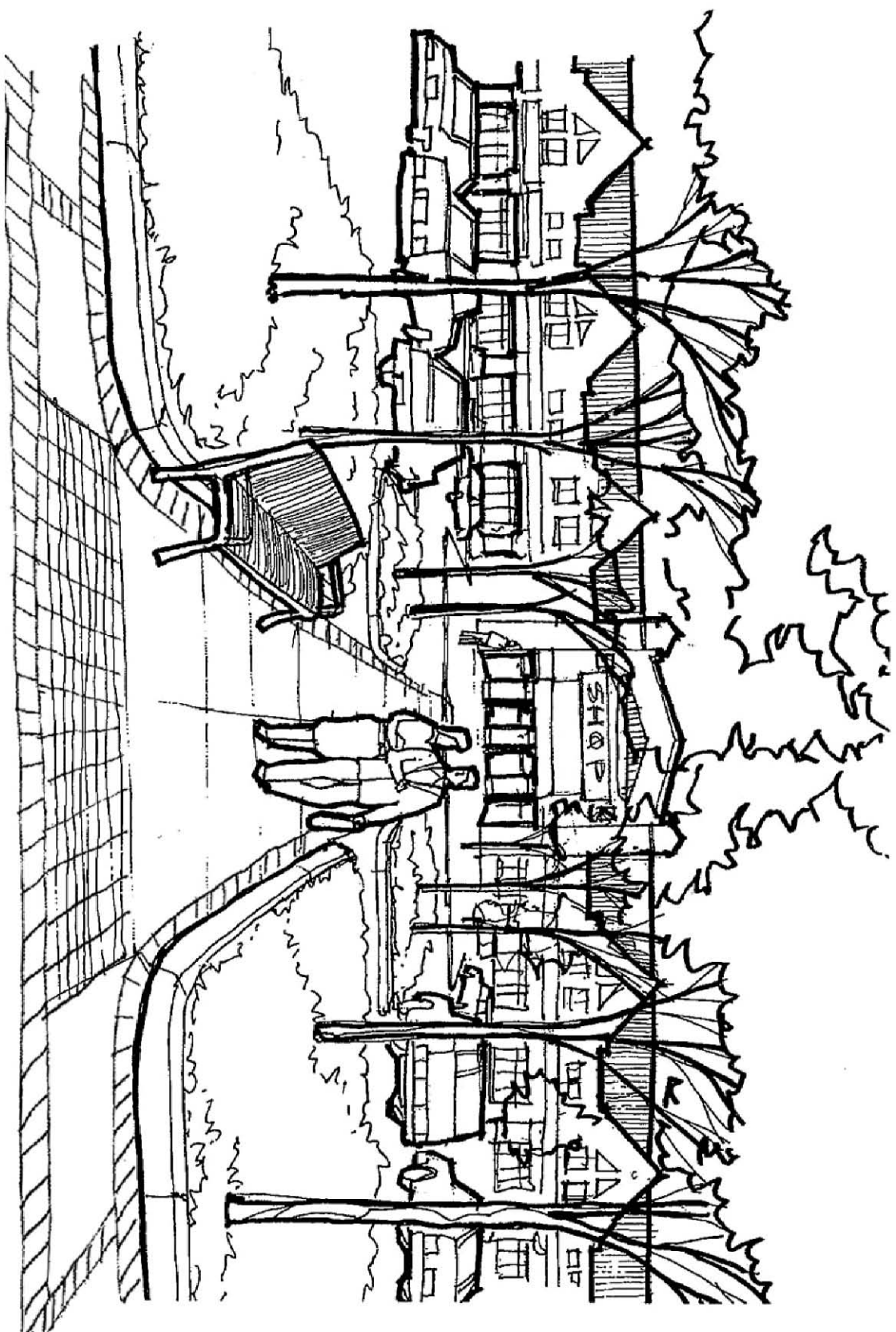


FEBRUARY 5, 2008

PREPARED BY:
JORDAN, JONES & GOULDING

FIGURE

4



PEDESTRIAN CONNECTIONS TO SIDEWALK

DESIGN GUIDELINES FOR:

BAYTREE-UNIVERSITY OVERLAY

CITY OF VALDOSTA, GEORGIA



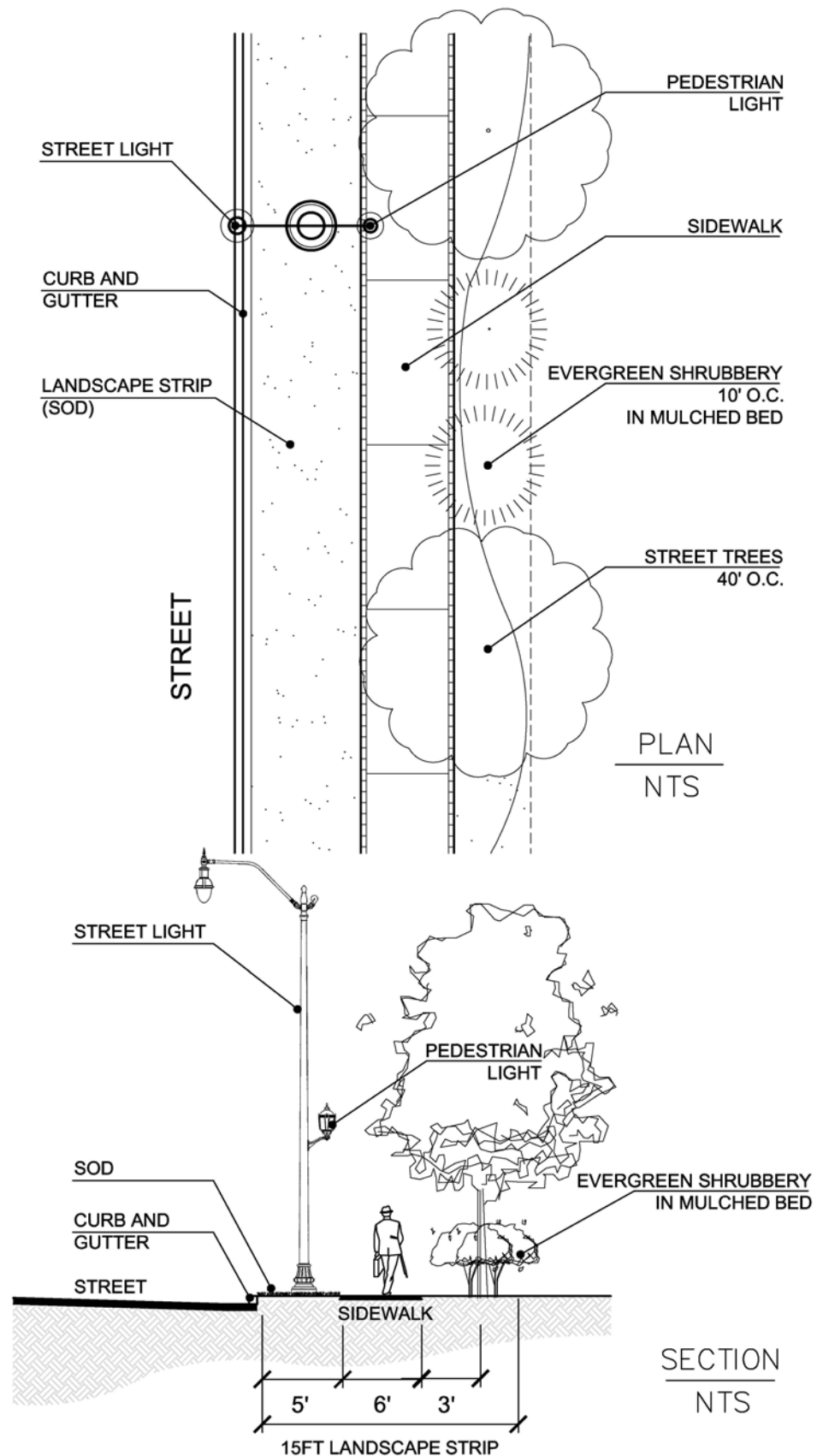
FEBRUARY 5, 2008

PREPARED BY:

JORDAN, JONES & GOULDING

FIGURE

5



LANDSCAPE STRIP IN UNIVERSITY ZONE

DESIGN GUIDELINES FOR:
BAYTREE-UNIVERSITY OVERLAY
 CITY OF VALDOSTA, GEORGIA

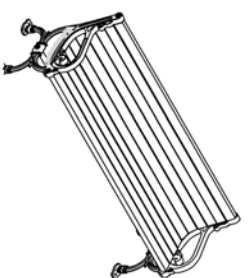


FEBRUARY 5, 2008

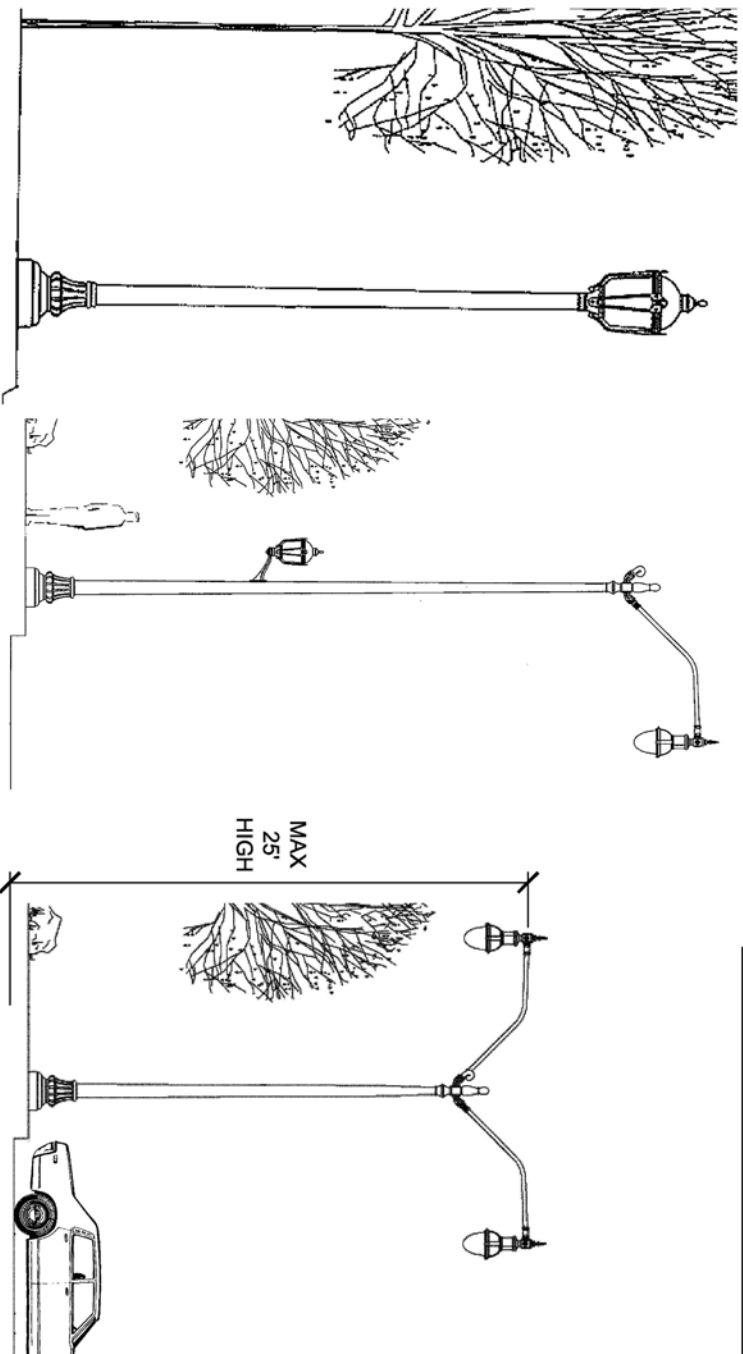
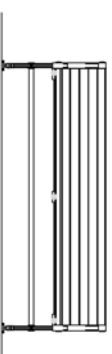
PREPARED BY:
 JORDAN, JONES & GOULDING

FIGURE

6



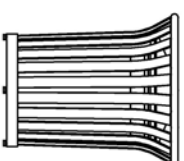
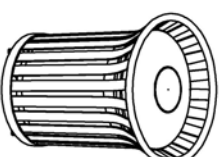
BENCHES



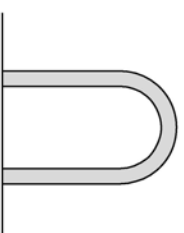
TYPE A PEDESTRIAN LIGHT

TYPE B STREET LIGHTING STANDARD

TYPE C PARKING LOT LIGHTING STANDARD



TRASH RECEPTACLE



BIKE RACK

OUTDOOR LIGHTING AND STREET FURNITURE

DESIGN GUIDELINES FOR:

BAYTREE-UNIVERSITY OVERLAY

CITY OF VALDOSTA, GEORGIA

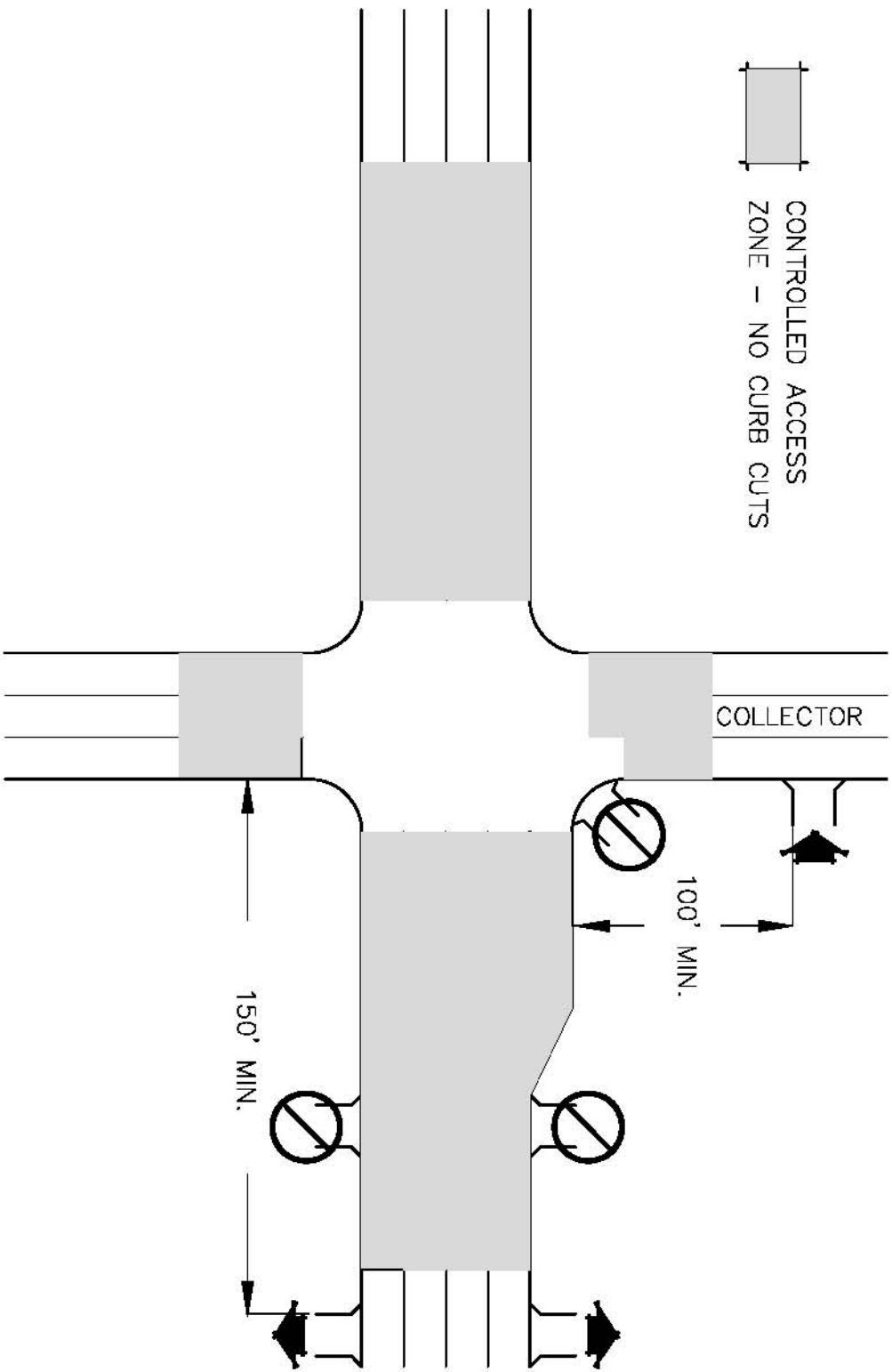


FEBRUARY 5, 2008

PREPARED BY:
JORDAN, JONES & GOULDING

FIGURE

7



INTERSECTION ACCESS CONTROL

DESIGN GUIDELINES FOR:

BAYTREE-UNIVERSITY OVERLAY

CITY OF VALDOSTA, GEORGIA

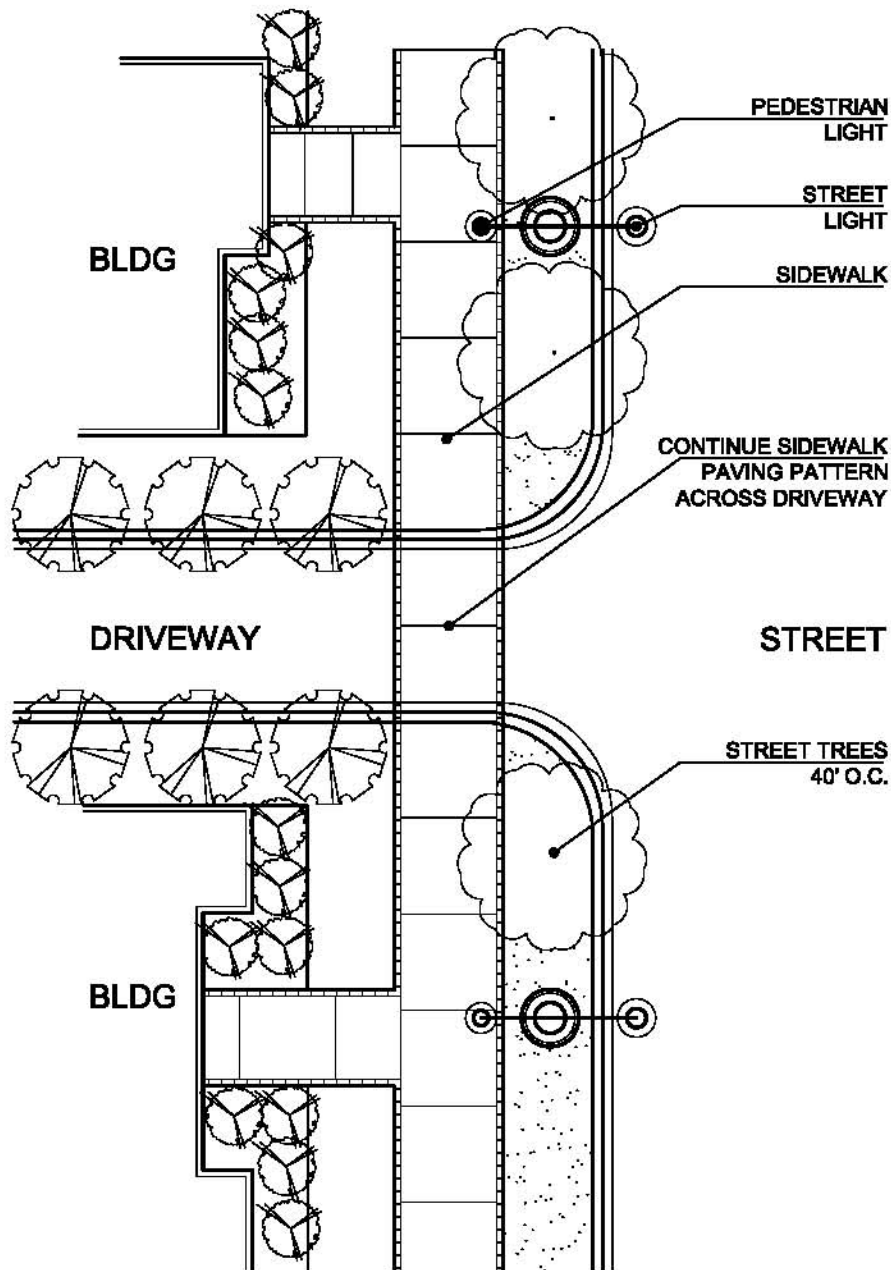


FEBRUARY 5, 2008

PREPARED BY:
JORDAN, JONES & GOULDING

FIGURE

8



DRIVEWAY PAVING AT SIDEWALK CROSSINGS

DESIGN GUIDELINES FOR:
BAYTREE-UNIVERSITY OVERLAY
 CITY OF VALDOSTA, GEORGIA

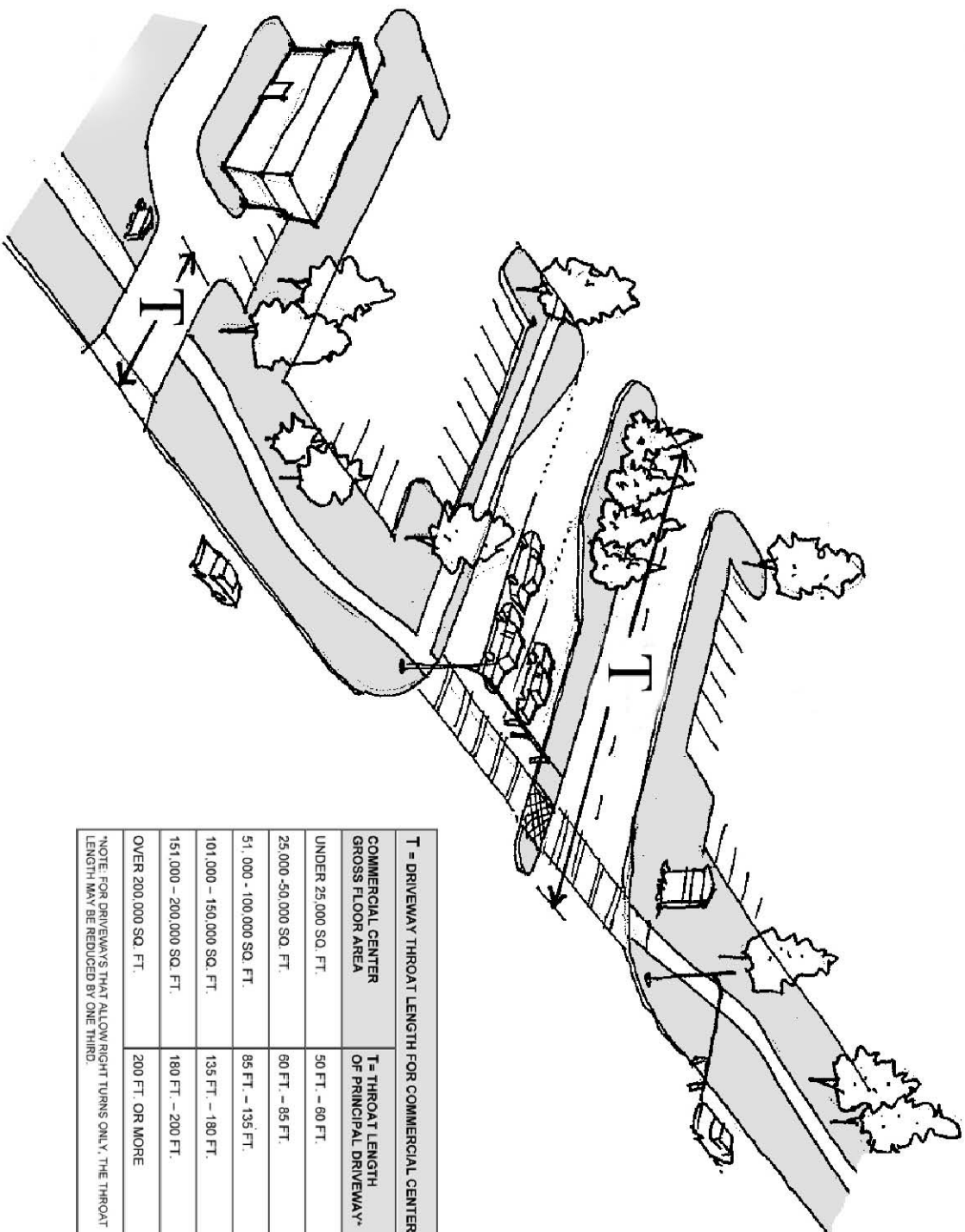


FEBRUARY 5, 2008

PREPARED BY:
 JORDAN, JONES & GOULDING

FIGURE

9



T = DRIVEWAY THROAT LENGTH FOR COMMERCIAL CENTERS	
COMMERCIAL CENTER GROSS FLOOR AREA	T = THROAT LENGTH OF PRINCIPAL DRIVEWAY*
UNDER 25,000 SQ. FT.	50 FT. - 60 FT.
25,000 - 50,000 SQ. FT.	60 FT. - 85 FT.
51,000 - 100,000 SQ. FT.	85 FT. - 135 FT.
101,000 - 150,000 SQ. FT.	135 FT. - 180 FT.
151,000 - 200,000 SQ. FT.	180 FT. - 200 FT.
OVER 200,000 SQ. FT.	200 FT. OR MORE

*NOTE: FOR DRIVEWAYS THAT ALLOW RIGHT TURNS ONLY, THE THROAT LENGTH MAY BE REDUCED BY ONE THIRD.

DRIVEWAY THROAT LENGTH

DESIGN GUIDELINES FOR:

BAYTREE-UNIVERSITY OVERLAY

CITY OF VALDOSTA, GEORGIA

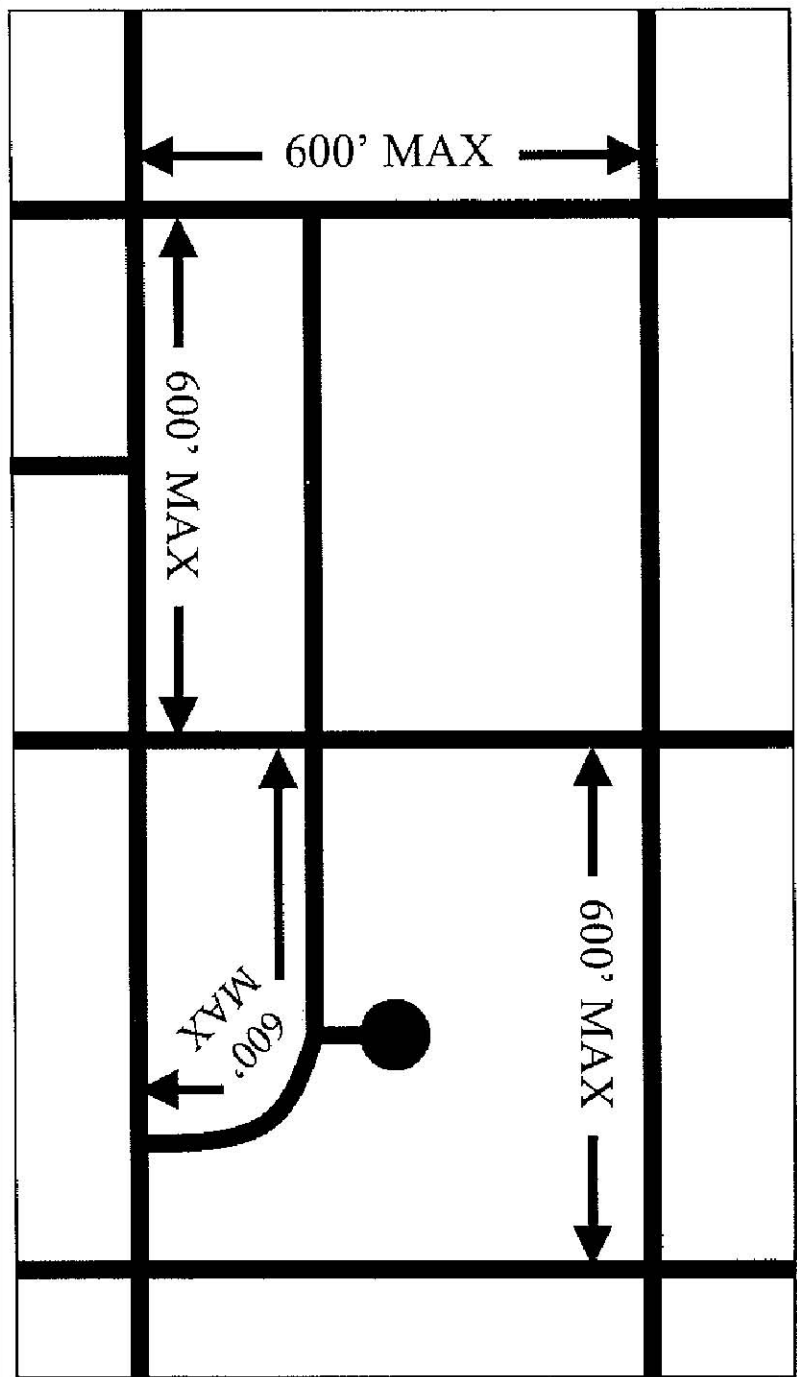


FEBRUARY 5, 2008

PREPARED BY:
JORDAN, JONES & GOULDING

FIGURE

10



BLOCK LENGTH

DESIGN GUIDELINES FOR:

BAYTREE-UNIVERSITY OVERLAY

CITY OF VALDOSTA, GEORGIA



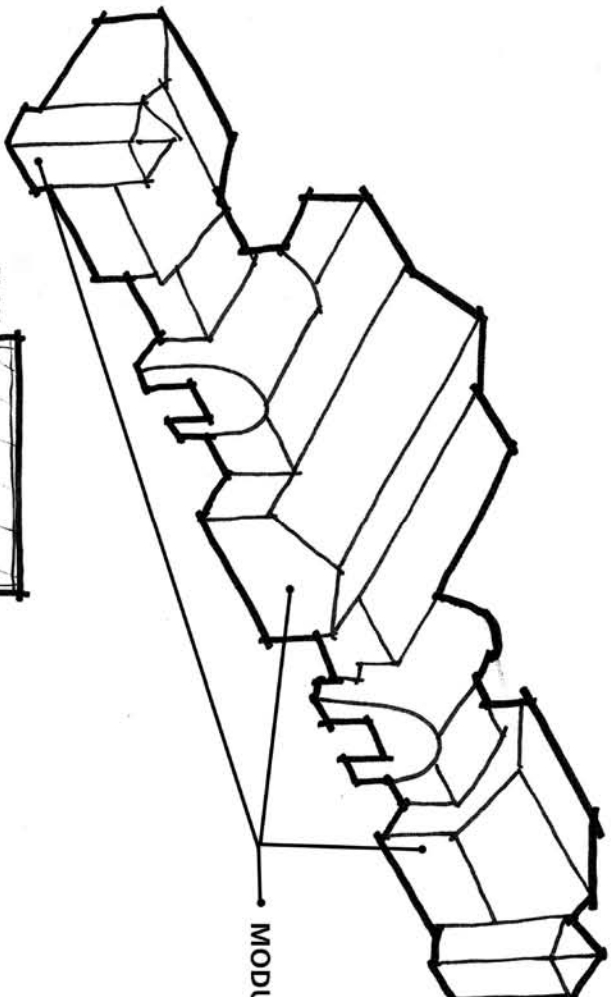
FEBRUARY 5, 2008

PREPARED BY:

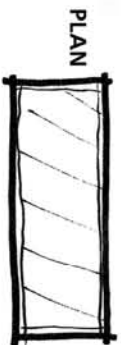
JORDAN, JONES & GOULDING

FIGURE

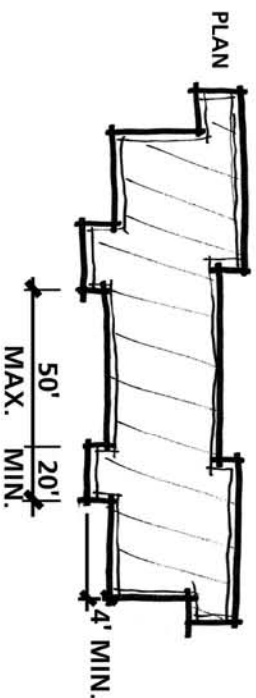
11



MODULATE BUILDING MASSING



MAXIMUM LENGTH-
BUILDING FACADE WITHOUT
MODULATION



MODULATE BUILDING FACADE

BUILDING MASSING AND MODULATION

DESIGN GUIDELINES FOR:

BAYTREE-UNIVERSITY OVERLAY

CITY OF VALDOSTA, GEORGIA

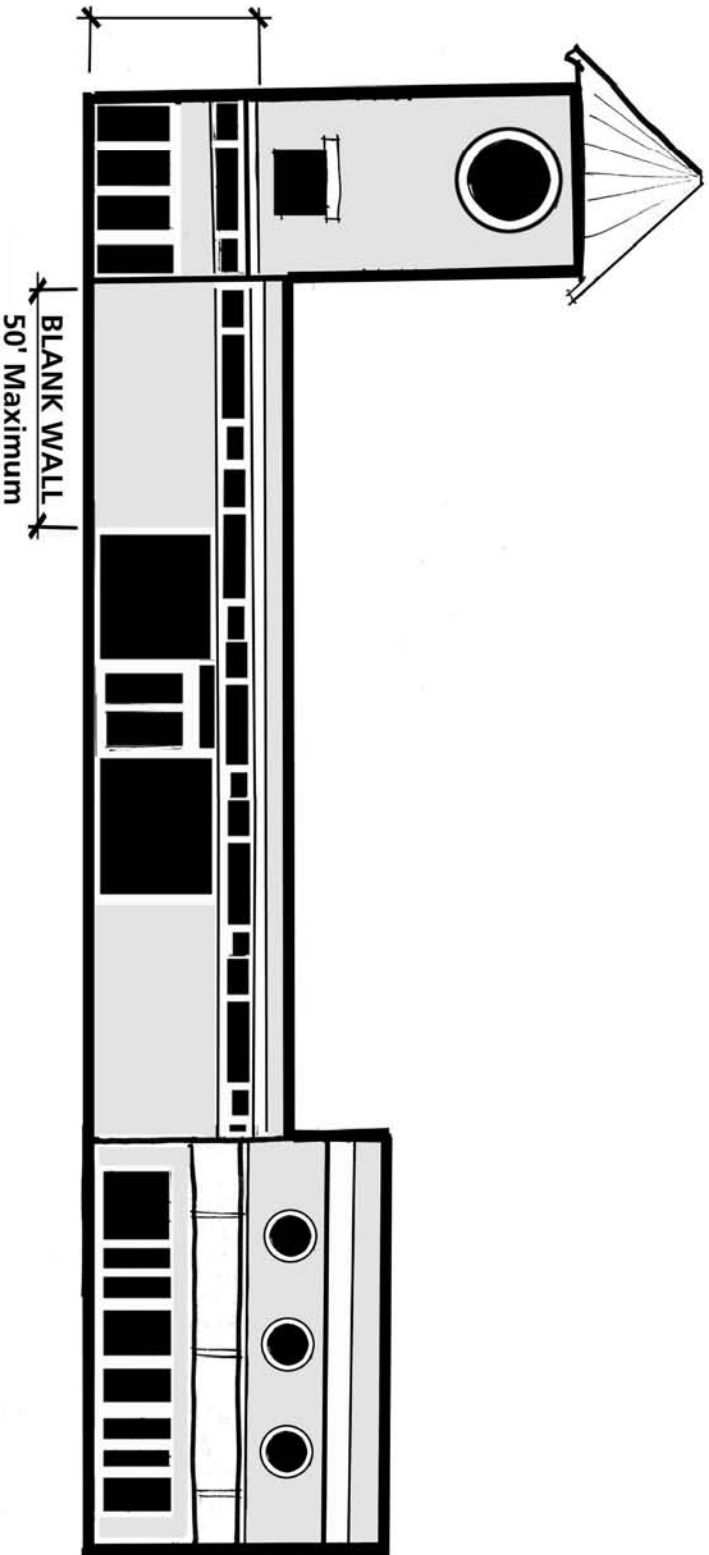


FEBRUARY 5, 2008

PREPARED BY:
JORDAN, JONES & GOULDING

FIGURE
12

FENESTRATION -
Min. of 30% of the First Floor



BUILDING FENESTRATION

DESIGN GUIDELINES FOR:

BAYTREE-UNIVERSITY OVERLAY

CITY OF VALDOSTA, GEORGIA



FEBRUARY 5, 2008

PREPARED BY:

JORDAN, JONES & GOULDING

FIGURE

13