

A publication from the Public Works Department

Spring is in the air!



As the weather warms up and the scenery gets green again, we in Public Works gear up for a busy year ahead. The employees of the Public Works Department - pride ourselves on delivering world class service. We strive to have all our interactions and the work we do strongly reflect our values of respect, collaboration, innovation and excellence.

If you ever have a question, comment or concern about the Public Works Department or the services please call us at 229.259.3588 or 229.259.3590. We value your feedback, and look forward to every opportunity to grow and improve.



HOLIDAYS

Good Friday, April 14

Memorial Day, May 29

The City of Valdosta will be closed on both of these holidays, However, as always the sanitation crews will be out collecting garbage.

The Sanitation division will collect garbage only. Residential yard waste and recycling will be picked up on the next work day.

Upcoming Events

Spring Electronics Recycling Event
Saturday, April 8

Bulk Trash Amnesty Day
Saturday, April 22

Public Works Week
May 22–26

Spring Yard Waste Pickup Guidelines



Yard waste must be placed at the curb on your regular garbage day. Please have your yard waste ready for pick-up by 5 a.m. Yard waste includes plant clippings, tree branches, grass clippings and leaves. On holidays or after storms, yard waste is picked up on a delayed schedule.

Yard waste piles that are larger than 4 x 8 x 5 ft. will be assessed with a \$45 fee.

Piles that measure 6 x 10 ft. will be assessed a \$90 fee or higher.

Yard waste which contains litter or other forms of garbage will require a special pickup and charges will be applied accordingly.

Helpful Hints:

- ⇒ Yard waste should be placed in your yard and not on your neighbor's or a vacant lot.
- ⇒ If you hire a landscaper to perform yard work, the contractor is responsible for collecting and removing the yard waste.
- ⇒ Place yard waste on the curb or city right-of-way (not in the street or gutter).
- ⇒ The maximum length of limbs is 4 feet in length and inches in diameter: limbs cannot exceed 35 pounds.
- ⇒ Do not mix with garbage, litter or other rubbish.
- ⇒ Place your yard waste away from trees, mailboxes, streetlights, and parked vehicles.



PLEASE SLOW DOWN!

The few minutes waiting behind a sanitation vehicle to clear a stop will go a long way to minimize the dangerous practice of swerving into the oncoming lane of traffic.

Watch for signals and warning devices on vehicles..

DID YOU KNOW??

The Public Works Department offers Roll-Off dumpster service to city residents and businesses. When you have large projects, construction, demolition waste, or large cut back of yard debris give us a call. We have 15, 20, 30, and 40 cubic yards available. Please contact our Customer Service office at 229.259.3588 for rates.

ACCEPTABLE RECYCLING MATERIALS

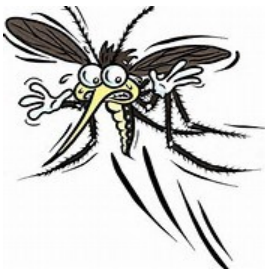
- Paper - Newspapers, magazines, and mixed paper
- Cardboard - (Please flatten)
- Glass - Beverage bottles and jars
- Cans - Aluminum, steel, and tin
- Plastic - Bottles and jugs

(Please no plastic bags, Styrofoam/peanuts, or plastic bags)



MOSQUITO CONTROL

Tips on eliminating mosquito breeding sites:



- Clean out eaves, troughs and gutters.
- Remove old tires and other items that can collect water.
- Turn over or remove empty plastic pots.
- Pick up all beverage containers and cups.
- Check tarps on boats or other equipment that may collect water.
- Replace water in birdbaths and pet feeding dishes at least once a week.
- Change water in plant trays, including hanging plants, at least once a week.

*Sanitation crews will automatically pick up bulky items at **NO COST**, as long as, these piles are placed appropriately at the curb on the designated collection day and*

measure 4 x 8 x 5 ft. or less. Piles larger than 4 x 8 x 5 ft. will be assessed a \$45 fee and a \$90 fee will be assessed for piles larger than 6 x 10 ft. Charges will be added to your water bill. If you

have questions about the bulky item pickups, contact our Dispatch office at 229.259.3590.

