

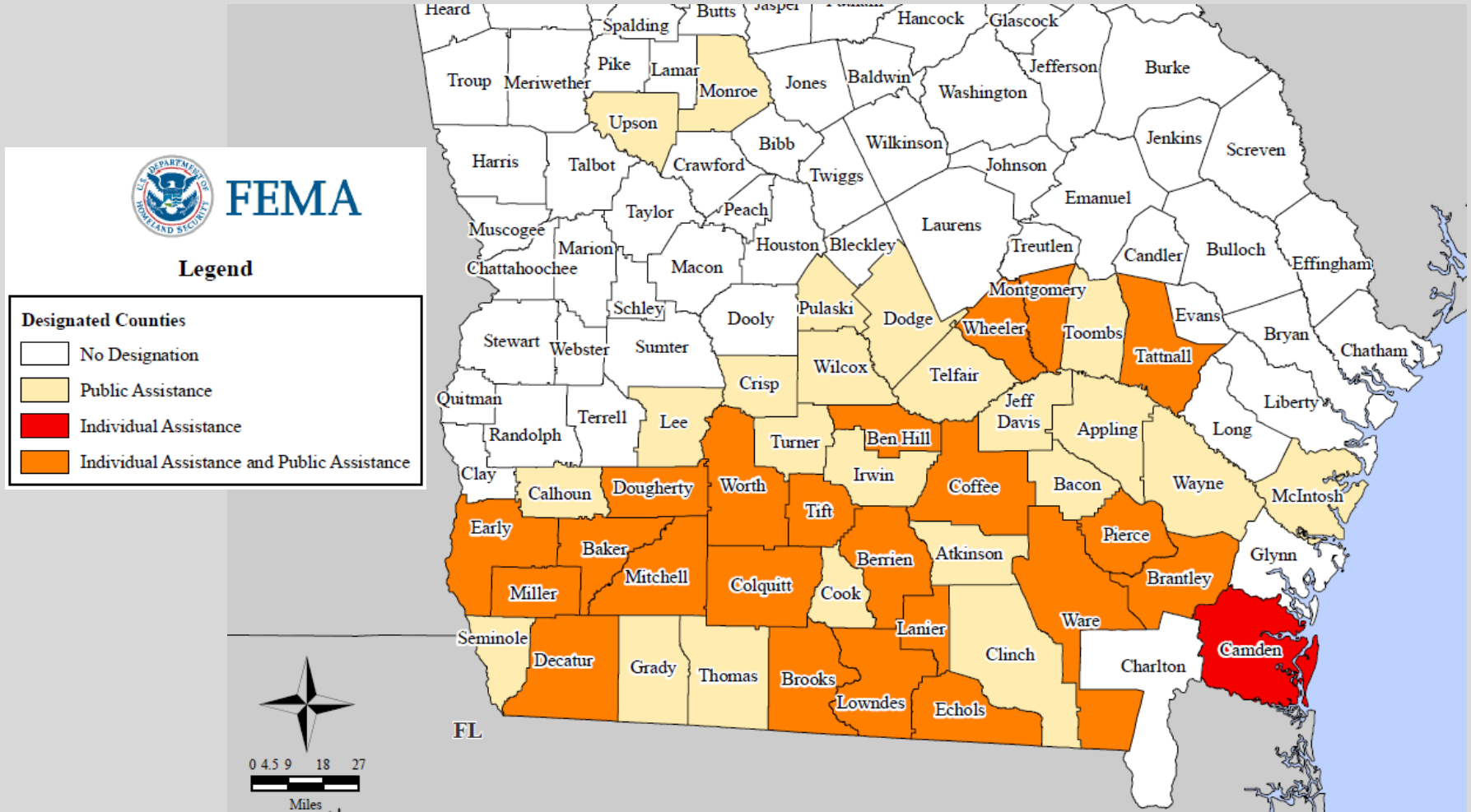
# City of Valdosta Overview and Update

May 14, 2014



# Background Information

Due to severe storms and flooding, in April 2009 President Obama declared  
46 Georgia Counties major disaster areas

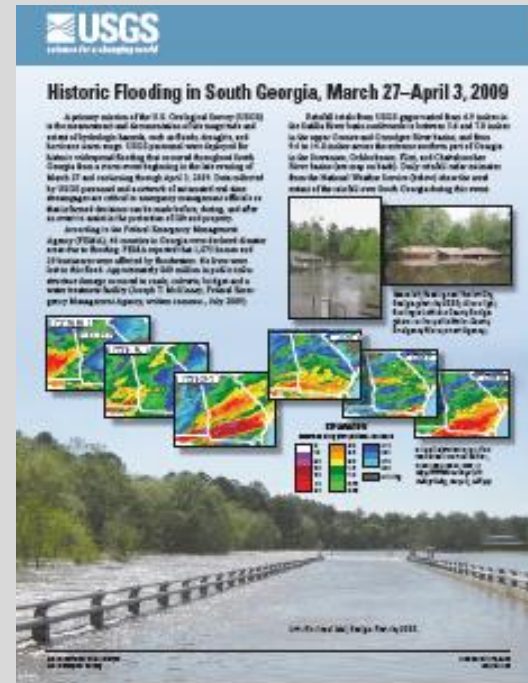


**\*\*In the State of Florida there were 17 Counties declared disaster areas\*\***

# Background Information

USGS rainfall gages recorded significant rainfall between March 27 – April 3, 2009

- 6.9 inches – Satilla River (Atkinson)
- 7.2 inches – Satilla River (Waycross)
- 13.3 inches – Alapaha River (Alapaha)
- 14 inches – Little River (Adel)
- 9.4 inches – Withlacoochee River (Quitman)
- 8.7 inches – Withlacoochee River (Valdosta)

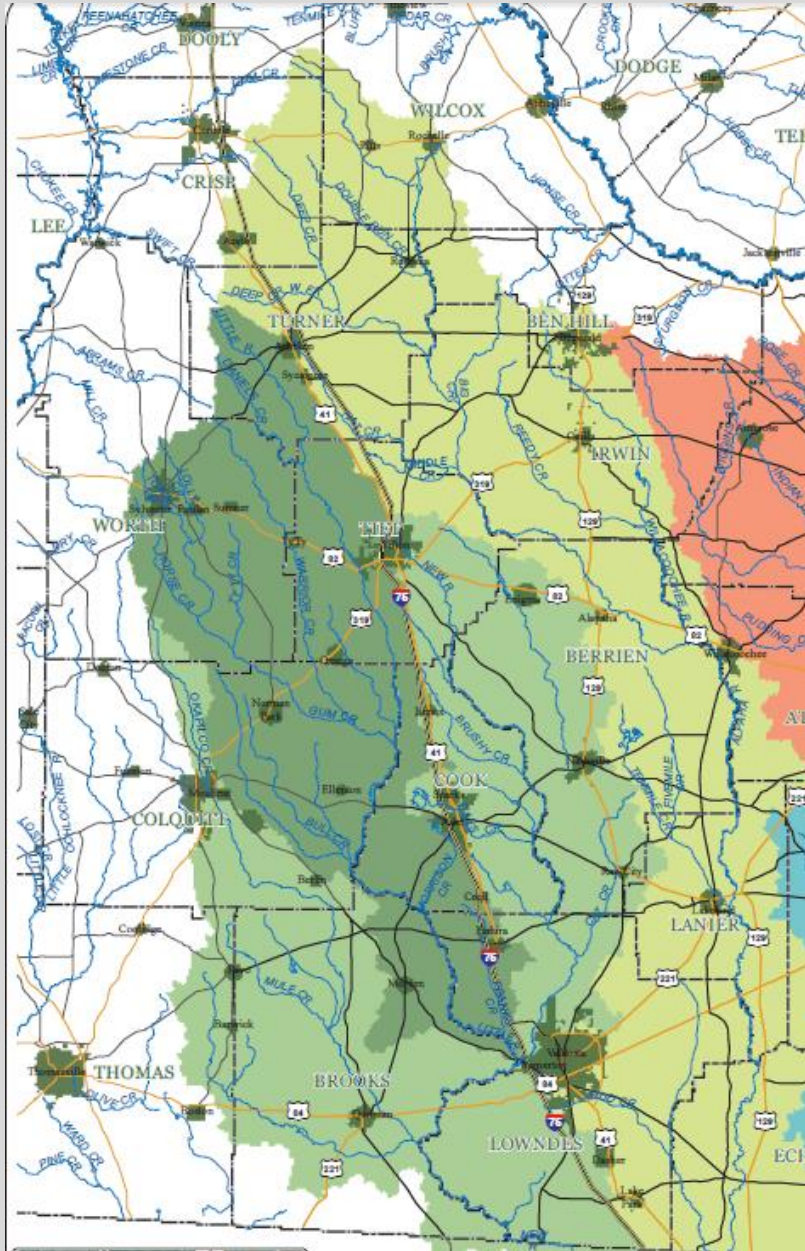


**The USGS Fact Sheet (2009 – 3079) reported that FEMA reported the following damages in 46 counties declared disaster areas:**

- 1,875 homes
- 29 businesses
- \$60 million in public infrastructure (e.g. roads, culverts, bridges and a WWTP)



# Background Information



## Alapaha River sub-watershed:

- 1,720 sq. miles
- 17 sq. miles of Valdosta drains to the Alapaha

## Withlacoochee River sub-watershed:

- 1,295 sq. miles
  - About ½ drains to the west of the city
  - About ½ drains to the south of the city
- 20 sq. miles of Valdosta drains to the Withlacoochee

## Little River sub-watershed:

- 891 sq. miles

- All of the Little River watershed and part of the Withlacoochee watershed (approx. 1450 sq. miles) join together just west of the city near Hwy 133
- Valdosta's drainage area to the river is only 1%



# Background Information

## 2009 Flood Pictures in Valdosta / Lowndes



US Highway 84 / Lowndes County  
*Courtesy of Valdosta Daily Times*



Lake Drive – City of Valdosta  
*Courtesy of Lowndes County EMA*



Park Lane – City of Valdosta  
*Courtesy of Valdosta Daily Times*



Franks Creek – City of Hahira  
*Courtesy of Valdosta Daily Times*

# Background Information

## Withlacoochee Wastewater Treatment Plant



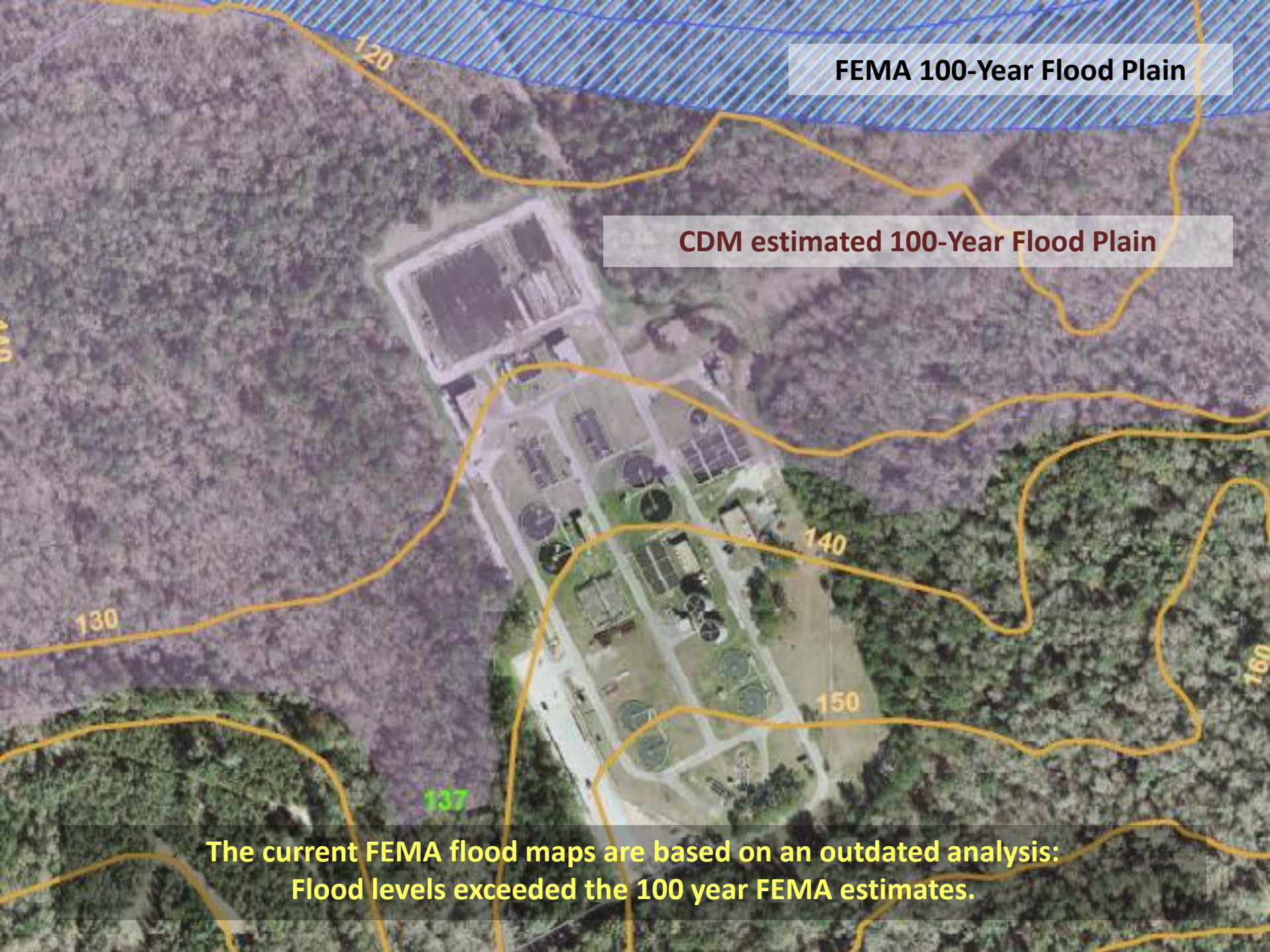
Before



During 2009 Flood

Withlacoochee River is approximately  $\frac{1}{4}$  mile away from the plant  
Plant significantly impacted by flood waters  
Experienced a complete loss of function for nine days  
Not fully operational for over a month





**FEMA 100-Year Flood Plain**

**CDM estimated 100-Year Flood Plain**

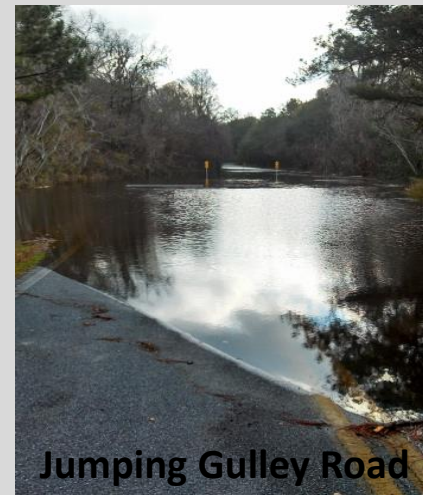
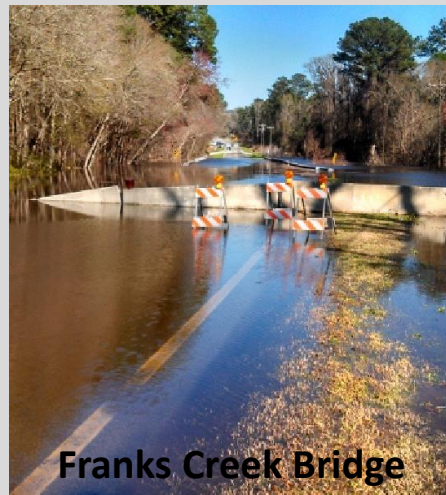
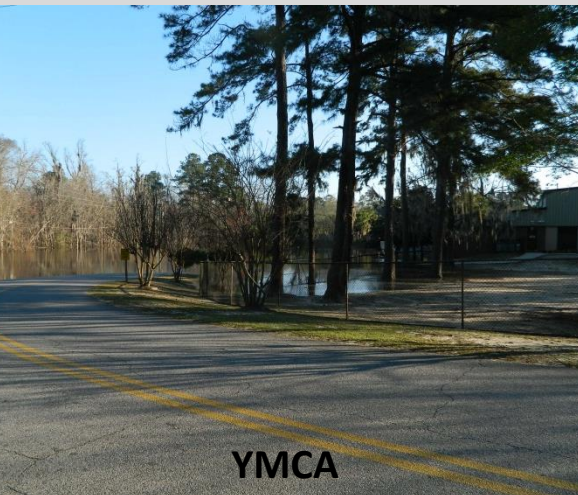
**The current FEMA flood maps are based on an outdated analysis:  
Flood levels exceeded the 100 year FEMA estimates.**



# Background Information

## 2013 Flood

- Withlacoochee waste water treatment plant had to be shut down
- Numerous locations throughout Lowndes County were flooded
- 13 roads / bridges closed in Lowndes County, including US-84





# Background Information

## Withlacoochee Wastewater Treatment Plant



Before



During 2013 Flood

Plant significantly impacted by flood waters  
Experienced a loss of function for three days

# Background Information

## 2013 Flood – USGS Recorded Data Flow at Multiple Locations

| Station Name   | Drainage Area (mi <sup>2</sup> ) | Date of Peak    | Peak GH (ft) | Peak Q (cfs)  |
|--|----------------------------------|-----------------|--------------|---------------|
| ALTAMAHA RIVER AT DOCTORTOWN, GA                       | 13600                            | 3/2/2013        | 13.56        | 66,900        |
| SATILLA RIVER NEAR WAYCROSS, GA                        | 1200                             | 3/1/2013        | 19.37        | 19,400        |
| LITTLE SATILLA RIVER NEAR OFFERMAN, GA                 | 646                              | 2/27/2013       | 11.20        | 6,080         |
| SATILLA RIVER AT ATKINSON, GA                          | 2790                             | 3/4/2013        | 18.23        | 27,000        |
| ALAPAHA RIVER NEAR ALAPAHA, GA                         | 663                              | 2/28/2013       | 16.97        | 9,650         |
| ALAPAHA RIVER AT STATENVILLE, GA                       | 1400                             | 3/4/2013        | 29.41        | 18,400        |
| WITHLACOOCHEE RIVER AT MCMILLAN RD, NEAR BEMISS, GA    | 502                              | 2/28/2013       | 21.79        | 17,400        |
| LITTLE RIVER NEAR ADEL, GA                             | 577                              | 2/26/2013       | 21.03        | 24,500        |
| <b>WITHLACOOCHEE RIVER AT US 84, NEAR QUITMAN, GA*</b> | <b>1480</b>                      | <b>3/1/2013</b> | <b>31.48</b> | <b>41,000</b> |
| OKAPILCO CREEK AT GA 33, NEAR QUITMAN, GA              | 269                              | 2/27/2013       | 16.30        | 10,100        |
| OCHLOCKONEE RIVER AT GA 188, NEAR COOLIDGE, GA         | 260                              | 2/26/2013       | 17.27        | 11,200        |
| OCHLOCKONEE RIVER NEAR THOMASVILLE, GA*                | 550                              | 2/27/2013       | 22.13        | 29,100        |
| SPRING CREEK NEAR IRON CITY, GA                        | 527                              | 2/27/2013       | 19.33        | 12,400        |

**Based on the USGS river flow of 41,000 cfs, even if there was a plant spill of 17 MGD, it would only account for 0.064 % of the water volume in the river at any given second. This means that 99.94% of the river water quality is not directly related to sewage.**



# Sewer System Overview



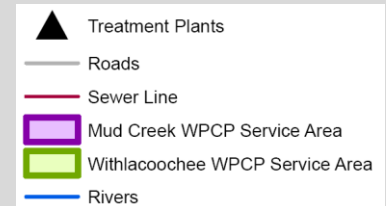
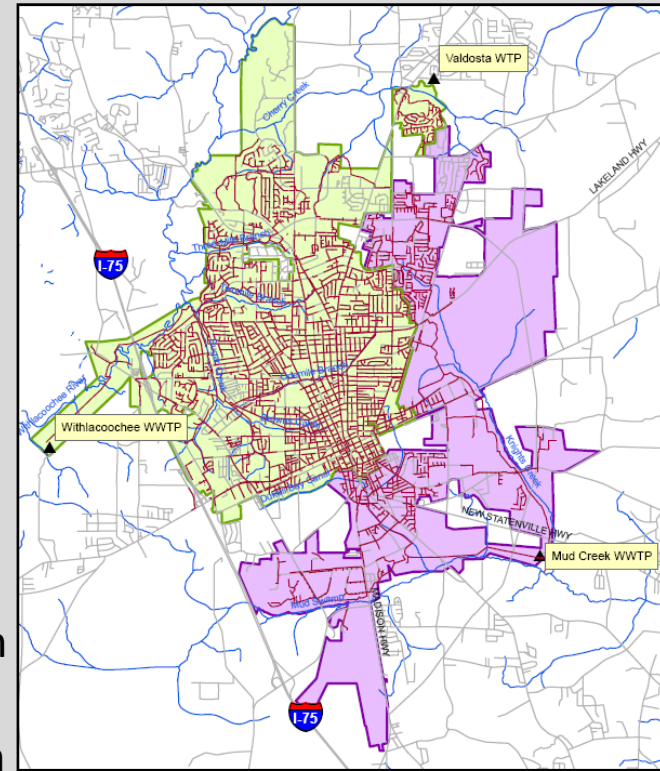
## Withlacoochee WWTP / WPCP

- Capacity of 8.0 MGD as an average annual daily flow
- Capability to treat peak flows up to 12.0 MGD

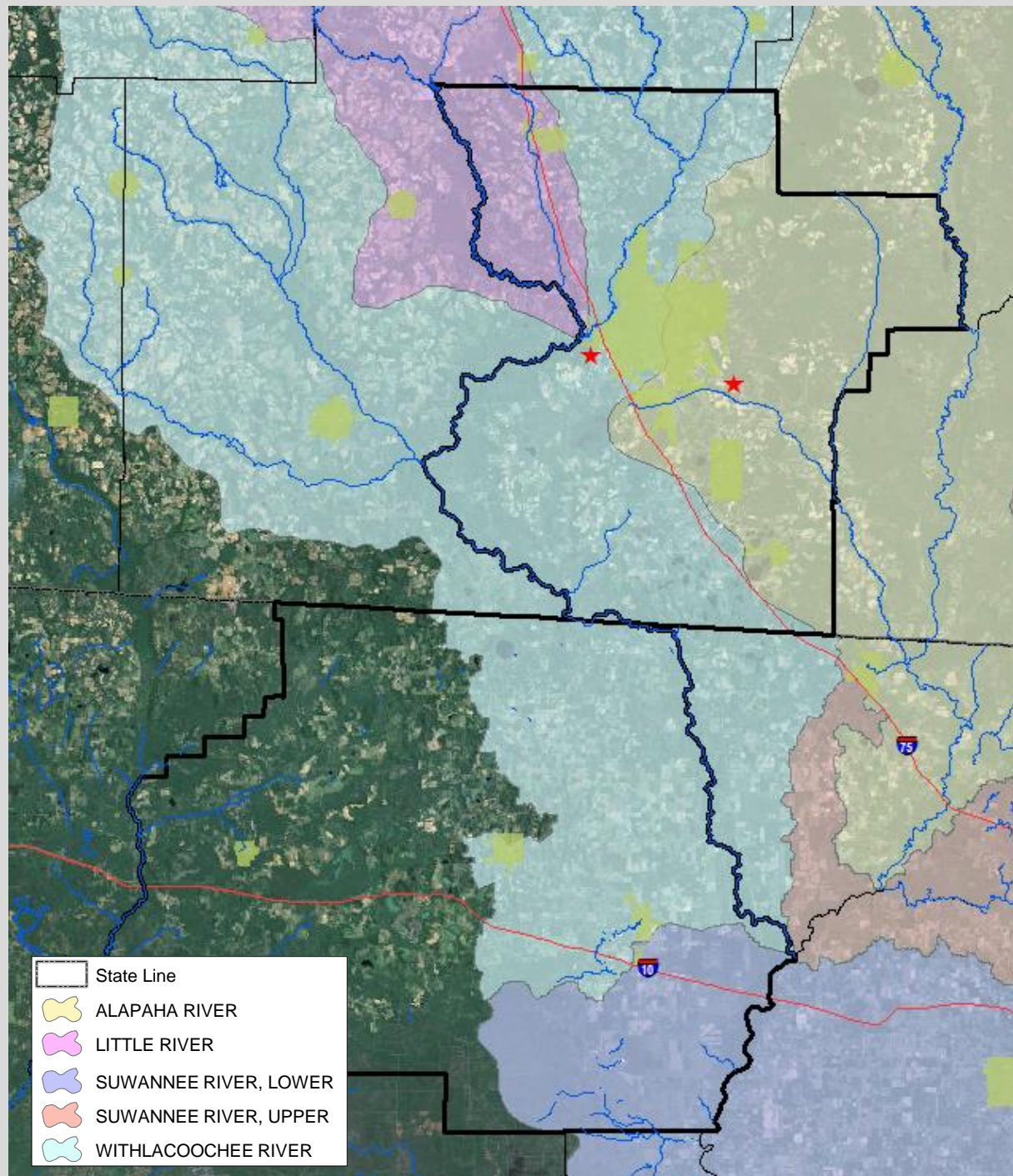
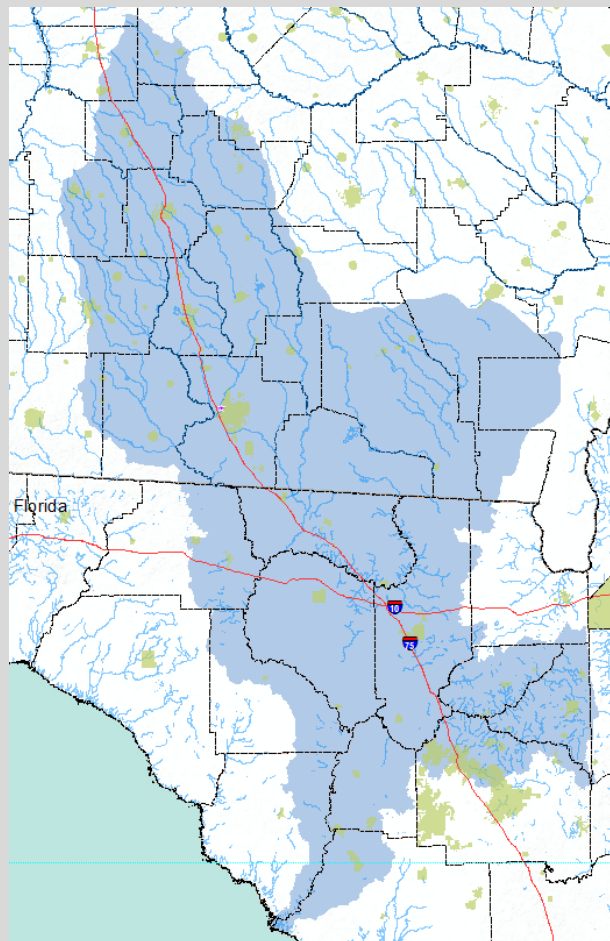


## Mud Creek WWTP / WPCP

- Renovation and expansion completed in 2012
- Capacity of 5.7 MGD as an average annual daily flow
- Capability to treat peak flows up to 17.0 MGD









# Sewer Improvements Update

- 2009 – 2013 City has completed \$49,453,784 sewer projects
- Consent Order / Five Year Action Plan Includes:
  - Relocation of the Withlacoochee Plant
  - New force main
  - Equalization basin
  - New headworks facility
  - Inspection of all sewer lines /manholes
  - Short term improvements

How do we plan to do this?

| Completed Sewer Projects from 2009 to Present |   |               |
|---|---|---------------|
| No.   | Project   | Cost          |
| 1   | CMMS for the Utility Department   | \$ 85,000     |
| 2   | Mud Creek Emergency Manhole Repair  | \$ 103,000    |
| 3   | Withlacoochee Biosolids Conveyor Repair (FEMA)  | \$ 52,000     |
| 4   | Withlacoochee Multi-Media Filters Repair (FEMA)   | \$ 46,000     |
| 5   | Replacement of SO2 and CL2 systems (FEMA)   | \$ 82,700.00  |
| 6   | Replacement of Reuse system controls (FEMA)   | \$ 13,377.59  |
| 7   | Electronics dryout and replacement of pannels, transformers, and misc components (FEMA) | \$ 169,277.00 |
| 8   | 30% Design for Force Main, EQ Basin and Lift Stations                                   | \$ 100,000    |
| 9   | CCVT Evaluation of Mud Creek and Knights Creek Trunk Lines                              | \$ 122,000    |
| 10  | Cleaning of Withlacoochee Influent Pump Station Wet Well                                | \$ 373,000    |
| 11  | Rehabilitation of Four Problematic Lift Stations  | \$ 1,500,000  |
| 12  | Withlacoochee Nitrification Pump Replacement  | \$ 60,000     |
| 13  | Withlacoochee Influent Pump Station Impeller Replacement                                | \$ 90,000     |
| 14  | Withlacoochee RAS Controller Replacement  | \$ 36,000     |
| 15  | Thickener pump replacement  | \$ 53,068.00  |
| 16  | Valve actuators for liftstation   | \$ 8,369.00   |
| 17  | 3 - 14hp Wilo pumps   | \$ 38,110.50  |
| 18  | RAS pump impellers  | \$ 33,642.00  |
| 19  | 4 - 5hp submersible pumps   | \$ 20,154.00  |
| 20  | Phase 1 Manhole Rehabilitation  | \$ 205,000    |
| 21  | Country Club Emergency Manhole Repair   | \$ 72,000     |
| 22  | Withlacoochee Roughing Tower Controller Replacement                                     | \$ 38,000     |
| 23  | Purchase of 75-acres for Relocation of Plant  | \$ 1,012,500  |
| 24  | Water and Sewer Rate Analysis   | \$ 50,000     |
| 25  | Construction of Tucker Road Lift Station  | \$ 204,000    |
| 26  | Withlacoochee Belt Press Major Repairs  | \$ 52,000     |
| 27  | Phase 2 Manhole Rehabilitation  | \$ 237,000    |
| 28  | Goodyear Lift Station Rehabilitation  | \$ 104,000    |
| 29  | CCTV work for Big County Lift Station Service Area                                      | \$ 108,000    |
| 30  | 100% Design for Force Main, EQ Basin and Lift Station                                   | \$ 1,400,000  |
| 31  | Withlacoochee Emergency Repairs for broken 20-inch Valve                                | \$ 616,000    |
| 32  | Withlacoochee Sludge Pump Replacement   | \$ 54,000     |
| 33  | Blanchard Street Emergency Repairs  | \$ 234,000    |
| 34  | Temporary Bar Screens at Withlacoochee  | \$ 104,770    |
| 35  | Temporary Blower System at Withlacoochee  | \$ 376,131    |
| 36  | Projected Easement costs for force main project   | \$ 370,000    |
| 37  | Recent emergency repairs at Withlacoochee follow Flood                                  | \$ 203,225    |
| 38  | Repair to Tucker Road Outfall   | \$ 27,460     |
| 40  | Mud Creek WPCP Expamnsion and Upgrades  | \$ 41,000,000 |
|   | Total:  | \$ 49,453,784 |
|   | Total Expenditures Related to the Withlacoochee Plant since 2009 =                      | \$ 5,583,784  |

# Sewer Improvements

## New Force Main Project / New Withlacoochee Wastewater Treatment Plant

**Total project cost is \$56+ million**

### Force Main Project:

- Contract Awarded to Garney Construction on April 24, 2014
- 2 master pump stations
- 2 minor pump stations
- Over 6 miles of force main
- New headworks structure
- 6 million gallon per day (MGD) flow equalization (EQ) basin
- Project Cost: \$36.7 million – Georgia Environmental Finance Authority (GEFA) Loan
- Completion date: July 2016 (Consent Order)
  - Contract has an 18 month timeframe – Proposed completion date December 31, 2015

### New Plant Project:

- Request for Proposals (RFP) closed on April 24, 2014
  - A selection committee has been formed and met on May 9<sup>th</sup> to review the proposals
- Relocation of the remainder of the old plant to the new site
- Project Cost: \$20+ million – SPLOST VII
- Completion date: August 2017



GORNTD RD  
PUMP STATION

# OVERVIEW OF PUMP STATION AND FORCE MAIN WORK

VALDOSTA  
CORRECTIONAL  
INSTITUTE

NEW PUMP STATION

54" TRUNK LINE  
TO BE ABANDONED

EXIT 18

REMER LN  
PUMP STATION

WITHLACOOCHEE  
WCPC

EXIT 16

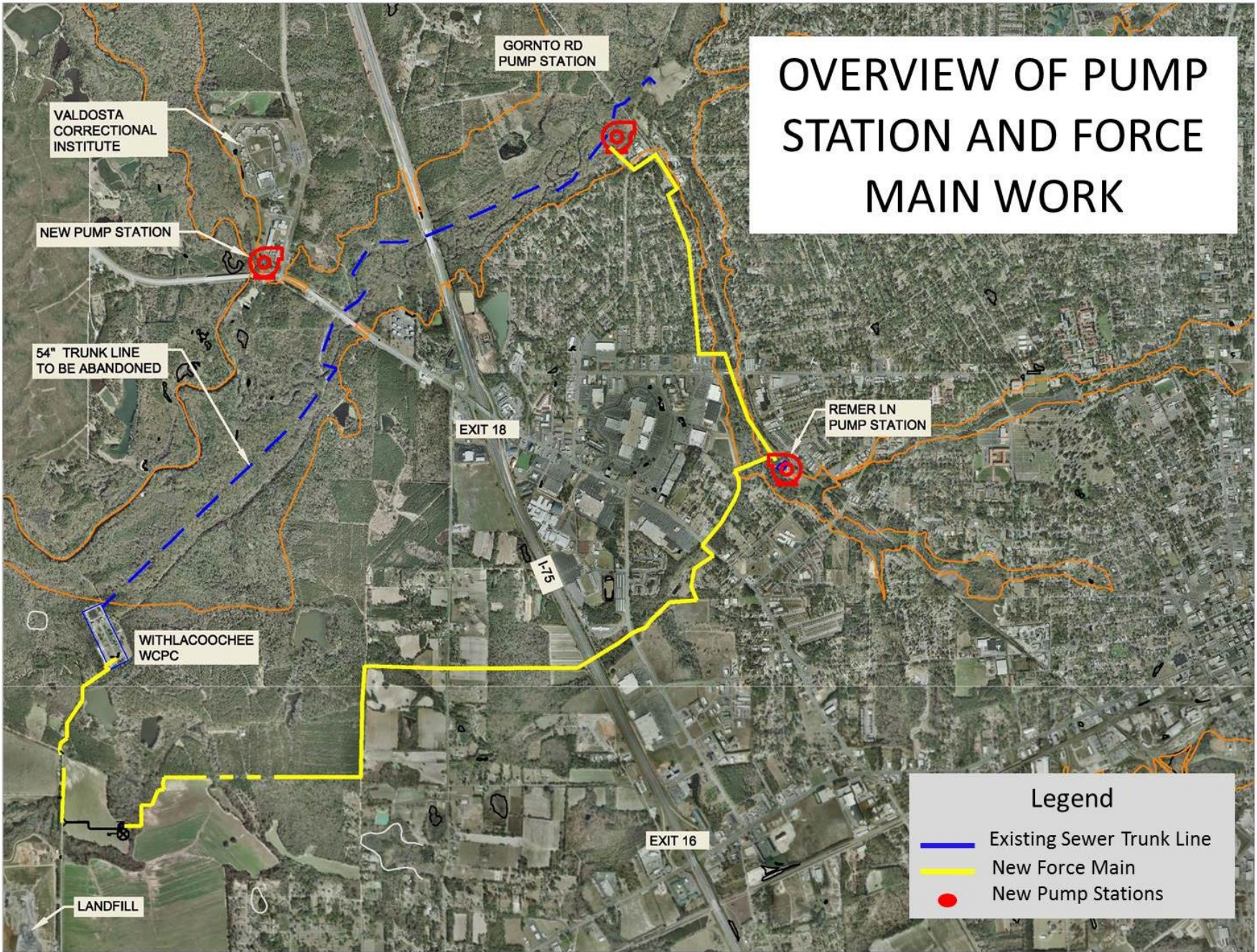
LANDFILL

Legend

Existing Sewer Trunk Line

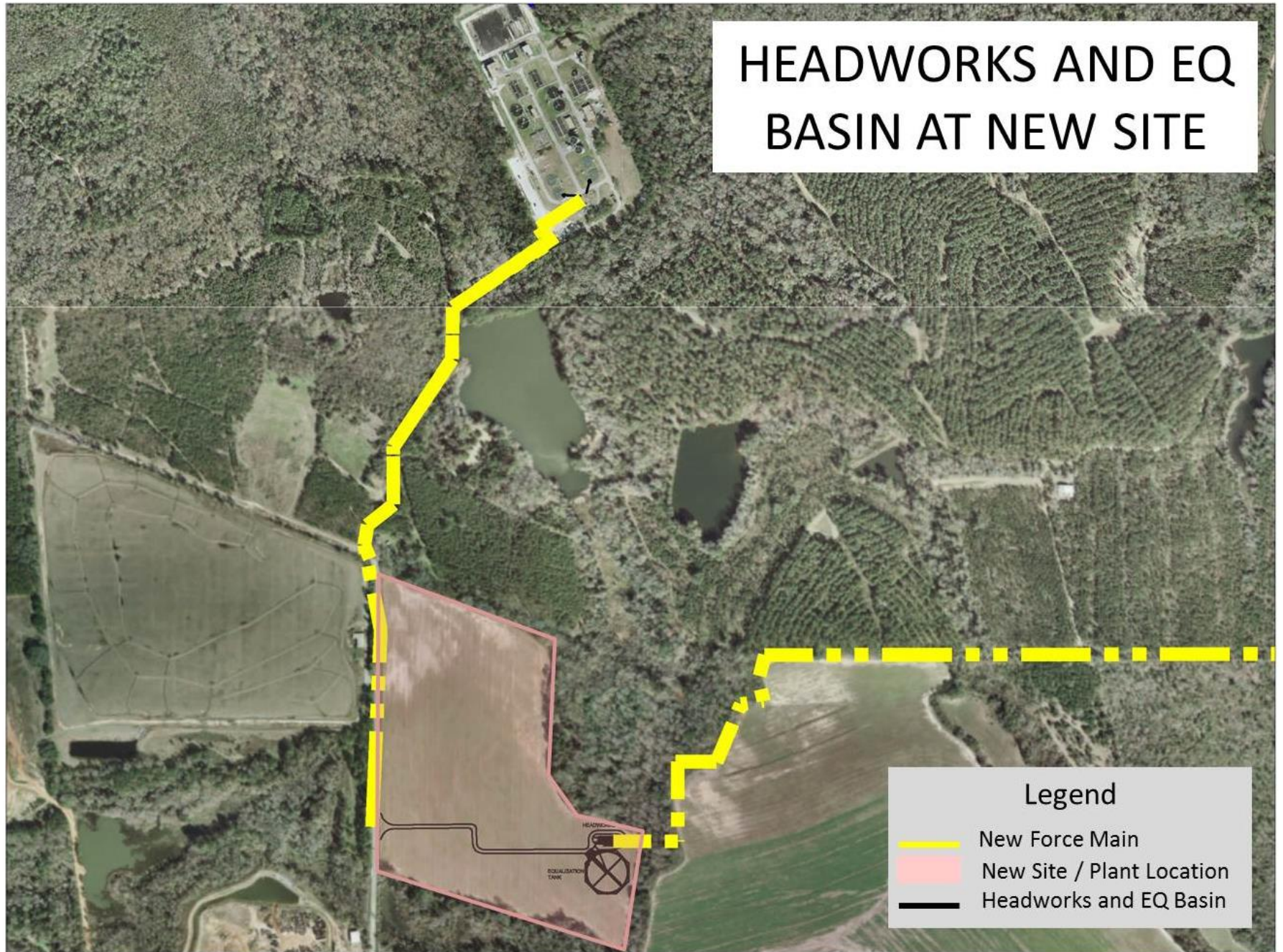
New Force Main

New Pump Stations





# HEADWORKS AND EQ BASIN AT NEW SITE





# Sewer Improvements

## Smoke Testing Sanitary Sewer System

- Hired Constantine Engineering
- Estimated \$700,000 to test 300 miles of sewer lines
- 4 year process
  - Year 1: 60 miles
  - Year 2: 60 miles
  - Year 3: 60 miles
  - Year 4: 120 miles
- Timeframe: January 2014 – December 2018



# Sewer Improvements

## Other Items

- \$2,250,000: Annual sewer manhole replacement / rehabilitation program
  - Minimum 30 manholes each year
    - Approximately 90 replaced/rehabbed to date
    - Bids due for Phase 3 (35 manholes) on May 21, 2014
      - Estimated contract award is June 12, 2014
      - Estimated completion date is October 11, 2014
  - Complete by December 2018
- \$5,000,000: Pump station replacement / rehabilitation program
  - 8 lift stations replaced / rehabbed to date
  - Bids due for Phase 2 (4 lift stations) on May 23, 2014
    - Estimated contract award is June 12, 2014
    - Estimated completion date is April 18, 2015
  - Complete by December 2018
- \$250,000: Pump station emergency portable generators
  - Over 4 years (e.g. 1 per year for 4 years)
  - Complete by December 2018





# Sewer Improvements

## Additional Information

- \$2,500,000 in short term projects – Emergency Repairs Completed



**Installed Influent Screens**



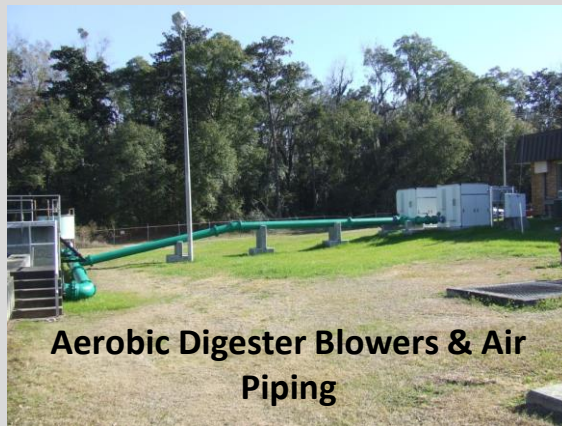
**RAS "de-ragging" pipeline**



**Nitrification Basin Air Piping**



**Tertiary or "Back Wash" Filter**



**Aerobic Digester Blowers & Air Piping**



**Mobile Belt Filter Press (BFP)**

# Sewer Improvements

## Additional Information

- \$4 - 5 million each year on regular repairs, maintenance, etc. throughout the system
- Since 1992, the City has received \$179 million in SPLOST funds and utilized on capital improvement projects. During the same timeframe, the City has expended \$167 million for water/sewer projects from SPLOST proceeds, system revenues, bonds, and GEFA loans.
- SPLOST VII is expected to generate about \$150 million, of which Valdosta will receive \$80 million. Nearly 70 percent of the funding will be dedicated to wastewater projects, which is \$55.4 million.



# Information

To get accurate and current information on the sewer improvements and activities visit: [www.valdostacity.com/utilities](http://www.valdostacity.com/utilities) and go to “Valdosta Sanitary Sewer System Improvements”

Also, sign up for City eNEWS:

- Press Releases
- City Council Meetings
- City Beat Newsletter

By doing this, it will help with confusion.  
Example:

## Broken sewer line on Blanchard St

Media coverage stated the spill was at the Withlacoochee Plant and showed a picture of plant; however, it was not related to the plant and in a different watershed.

The screenshot shows the Valdosta City website. The header features the Valdosta logo with the tagline "A City Without Limits" and the City of Valdosta, GA logo. A search bar and a "I Want To..." dropdown menu are in the top right. The navigation menu includes links for HOME, ABOUT US, MAYOR & COUNCIL, ADMINISTRATION, DEPARTMENTS, RESIDENTS, BUSINESS, and VISITORS. The Utilities Department page is displayed, with a sidebar menu listing various services. The main content area features the title "Valdosta Sanitary Sewer System Improvements" with a sub-header "CONTACT PERSON" and contact information for Henry Hicks, Director of Utilities. Below this, there are four photographs showing construction work. A paragraph of text describes the project's funding and goals. A "Force Main Project - Map" link is provided, followed by a bulleted list of project details.

**VALDOSTA**  
A City Without Limits

CITY OF  
VALDOSTA, GA

HOME | ABOUT US | MAYOR & COUNCIL | ADMINISTRATION | DEPARTMENTS | RESIDENTS | BUSINESS | VISITORS

Departments » Utilities Department

▼ Utilities Department

- ▶ Administration
- ▶ Design and GIS
- ▶ Cross-Connection Control Program
- ▶ Fats, Oils, and Grease (FOG) Prevention Program
- ▶ Industrial Pre-Treatment
- ▶ Construction Management
- ▶ Water Treatment
- ▶ Wastewater Treatment
- ▶ Water Distribution
- ▶ Sewer Collection
- ▶ Meter Reading Division
- ▶ Standard and Specification for Water and Sewer Construction
- ▼ **Valdosta Sanitary Sewer System Improvements**
- ▶ Smoke Testing Sanitary Sewer System

*Valdosta Sanitary Sewer System Improvements*

E-mail Print

**CONTACT PERSON**  
**Henry Hicks, Director of Utilities**  
**Utilities Department**  
P.O. Box 1125  
1016 Myrtle Street  
Valdosta, Georgia 31603  
**Phone:** (229) 259-3592  
**Fax:** (229) 241-8285  
**E-mail:** [hhicks@valdostacity.com](mailto:hhicks@valdostacity.com)

The City of Valdosta Utilities Department has been working diligently on a number of wastewater improvements.

Since 1992, the city has received \$179 million in Special Purpose Local Option Sales Tax (SPLOST) funds and invested in capital improvement projects (CIP). During the same timeframe, the city has expended \$167 million for water/wastewater projects from SPLOST proceeds, system revenues, bonds, and Georgia Environmental Finance Authority (GEFA) loans.

On November 5, 2013, the SPLOST VII was approved by voters and is expected to generate about \$150 million, of which Valdosta will receive an estimated \$80 million. Nearly 70 percent of the funding will be dedicated to wastewater projects, which is \$55.4 million. Over the next 4 years, projects that will be funded by SPLOST, system revenues, GEFA loans, etc. include:

**Force Main Project - Map**

- 2 master pump stations
- 2 minor pump stations
- Over 6 miles of force main
- New headworks structure
- 6 million gallon per day (MGD) flow equalization (EQ) basin
- Project Cost: \$36 million – Georgia Environmental Finance Authority (GEFA) Loan

# Information

|  |  |  |  |  |  |  |  |  |  |
|--|--|--|--|--|--|--|--|--|--|
| Name of City/County: <u>VALDOSTA/LOWNDES</u>                   |  |  |  |  | Spill Amount: _____                    |  |  |  |  |
| Date Spill Occurred: <u>FEBRUARY 26, 2014</u>                  |  |  |  |  | Date Spill Reported to EPD: _____      |  |  |  |  |
| Spill Location: <u>WITHLACOOCHEE WPCP</u>                      |  |  |  |  | Date of Public Notice: _____           |  |  |  |  |
| Name of Receiving Stream Affected : <u>WITHLACOOCHEE RIVER</u> |  |  |  |  |  |  |  |  |  |
| Upstream Sampling Location: <u>WITH. RIVER @ 133 WEST</u>      |  |  |  |  | Written Report Submitted To EPD: (Y/N) |  |  |  |  |
| Downstream Sampling Location: <u>WITH. RIVER @ 84 WEST</u>     |  |  |  |  | Copy of PN Submitted to EPD: (Y/N)     |  |  |  |  |

|   |           | ABOVE |        |     |       | BELOW |        |     |       |
|---|-----------|-------|--------|-----|-------|-------|--------|-----|-------|
|   | DATE      | DO    | TEMP   | pH  | FCOLI | DO    | TEMP   | pH  | FCOLI |
| DAY 1   | 2/27/2014 | 7.1   | 13.1 C | 5.9 | 460   | 6.8   | 13.1 C | 5.9 | 155   |
| DAY 2   | 2/28/2014 | 7.0   | 13.4 C | 5.7 | 160   | 7.3   | 13.2 C | 5.8 | 220   |
| DAY 3   | 3/1/2014  | 6.9   | 14.6 C | 5.8 | 120   | 7.2   | 13.9 C | 6.0 | 90    |
| DAY 4   | 3/2/2014  | 6.7   | 13.4 C | 5.7 | 80    | 7.4   | 13.8 C | 5.9 | 50    |
| DAY 5   | 3/3/2014  | 6.9   | 15.1 C | 5.8 | 360   | 6.8   | 15.5 C | 6.0 | 115   |
| DAY 6   | 3/4/2014  | 5.3   | 13.1 C | 5.7 | 90    | 5.6   | 13.6 C | 5.9 | 30    |
| DAY 7   | 3/5/2014  | 7.1   | 11.7 C | 5.8 | 120   | 6.8   | 10.8 C | 6.0 | 100   |
| Week 1 Geometric Mean:                          |           |       |        |     | 161   | 91    |        |     |       |
| WEEK 2  | 3/12/2014 | 6.4   | 15.6 C | 5.9 | 390   | 5.9   | 16.3 C | 5.7 | 170   |
| WEEK 3  | 3/19/2014 | 5.8   | 14.7 C | 5.2 | 840   | 6.1   | 15.1 C | 5.4 | 820   |
| WEEK 4  | 3/26/2014 | 6.4   | 13.7 C | 5.6 | 65    | 5.9   | 14.3 C | 5.7 | 10    |
| Month 1 Geometric Mean:(Use all 10 data points) |           |       |        |     | 189   | 97    |        |     |       |



# Information

## Withlacoochee River Results

|                       | Upstream of Plant (Hwy 133) |                       | Downstream of Plant - Hwy 84 |                       |
|-----------------------|-----------------------------|-----------------------|------------------------------|-----------------------|
| Date                  | Fecal Coliform*             | E. coli**             | Fecal Coliform               | E. coli               |
| 03/26/14              | 65 / 100 ml                 | 55 / 100 ml           | 10 / 100 ml                  | 30 / 100 ml           |
| 03/30/14              | 180 / 100 ml                | N/A                   | 110 / 100 ml                 | N/A                   |
| 04/01/14              | 70 / 100 ml                 | 30 / 100 ml           | 30 / 100 ml                  | 50 / 100 ml           |
| 04/02/14              | 70 / 100 ml                 | 20 / 100 ml           | 40 / 100 ml                  | 20 / 100 ml           |
| 04/06/14              | 31 / 100 ml                 | N/A                   | 100 / 100 ml                 | N/A                   |
| 04/08/14              | 10200 / 100 ml              | N/A                   | 6200 / 100 ml                | N/A                   |
| 04/09/14              | 2820 / 100 ml               | 1270 / 100 ml         | 1310 / 100 ml                | 840 / 100 ml          |
| 04/15/14              | 7400 / 100 ml               | 1720 / 100 ml         | 120 / 100 ml                 | 40 / 100 ml           |
| 04/19/14              | 1720 / 100 ml               | N/A                   | 430 / 100 ml                 | N/A                   |
| 04/24/14              | 710 / 100 ml                | 160 / 100 ml          | 80 / 100 ml                  | 30 / 100 ml           |
| <b>Geometric Mean</b> | <b>463.9 / 100 ml</b>       | <b>150.3 / 100 ml</b> | <b>146 / 100 ml</b>          | <b>55.81 / 100 ml</b> |

\* EPD rule 391-3-6-.03 sets the fecal coliform standard between the months of November - April at 1,000 colony forming units per 100 milliliters of water (cfu/100ml). Between May – October the standard is 200 cfu/100 ml. These standards are not dependent upon a single test but are the geometric mean of at least four samples collected within two weeks and not less than 24 hrs apart.

\*\* E. coli samples are only taken as part of the watershed protection program.

# Pollutant Facts


- Biggest contributor of fecal matter in streams, lakes, rivers and waterways:
  - Wildlife
  - Livestock operations
  - Domesticated animals
  - Septic Systems
  - Wastewater Treatment Plants
- In most cases of wastewater treatment plants, water quality is better downstream than above.
- Wastewater treatment plants are generally 4% of the mass loadings in waterways. The other 96% of pollutants are from non-point source pollution such:
  - Fertilizer, pesticides, herbicides and insecticides (Ag / residential land)
  - Oil, grease and other chemicals (Urban runoff)
  - Sediment (Constructions sites, crop/forest lands, streambanks)
  - Bacteria and nutrients (live stock, pet wastes, failing septic systems)



# Information

In addition:

- Florida Department of Health issues / retracts advisories and can be found on their website under “Newsroom”
- Suwannee River Water Management District then adds them to their website under “Alerts” on the front page and emails those who have subscribed




**It's a New Day in Public Health.**  
The Florida Department of Health works to protect, promote & improve the health of all people in Florida through integrated state, county, & community efforts.

Counties About Us Contact Us

Search DOH Search

Search A-Z topic index


Programs & Services Licensing & Regulation Statistics & Data Certificates Diseases & Conditions Environmental Health



**National Nutrition Month**


Proper nutrition is important for people of all ages and is beneficial for overall health. Be a part of National Nutrition Month.

- [Governor Rick Scott's Proclamation](#)
- VISIT: [www.HealthiestWeightFL.com](http://www.HealthiestWeightFL.com)



**2014-15 Closing the Gap Grant Application Released.**  
The CTG program provides grants to stimulate the development of community-based and neighborhood-based health programs for ethnic populations. [Read more](#)

**MISSION:**  
To protect, promote & improve the health of all people in Florida through integrated state, county & community efforts.



**Vision:** To be the **Healthiest State** in the Nation

**FOR IMMEDIATE RELEASE**  
March 21, 2014

**CONTACT:** Office of Communications  
(850) 245-4111

**GOVERNOR RICK SCOTT'S 2014-2015 IT'S YOUR MONEY TAX CUT BUDGET**

**Contact the Department**  
**850-245-4444**  
TDD: 850-410-1451

**Report a Disease**  
Contact your [local county health department](#).  
Available 24 hours/day

**Rick Scott**  
Governor

**John H. Armstrong, MD, FACS**  
State Surgeon General & Secretary

**STATEMENT FROM THE FLORIDA DEPARTMENT OF HEALTH:  
WITHLACOCHEE RIVER WATER NOW MEETS WATER QUALITY STANDARDS**

**TALLAHASSEE** - The Florida Department of Health today lifted its precautionary health advisory issued on March 19 for Madison and Hamilton counties after the City of Valdosta reported a reported a spill, made up of a combination of storm water and untreated sewage that overflowed into the One-Mile Branch, Two-Mile Branch, Sugar Creek and Cherry Creek which flow into the Withlacoochee River.

Recent river water samples taken by the Florida Department of Environmental Protection indicate the river water meets surface water quality standards for bacteria thus ensuring the public they may resume water-related activities.

Follow us on Twitter at [@HealthyFla](#) and on [Facebook](#). For more information about the Florida Department of Health please visit [www.floridahealth.gov](http://www.floridahealth.gov).

DOH protects, promotes and improves the health of all people in Florida through integrated state, county and community efforts.

###

**EMERGENCY ALERT** Flooding, Health Advisory, and Idle Speed/No Wake Information  
[Read On...](#)

ABOUT THE DISTRICT DISTRICT LANDS PERMITS & RULES WATER RESOURCES RESOURCE LIBRARY

**Suwannee River**  
WATER MANAGEMENT DISTRICT

GOVERNING BOARD RIVER & LAKE LEVELS

WATER WELL E-PERMITS RECREATION

Find us on Facebook

Agriculture  
Business & Financial  
Permitting Consistency  
Minimum Flows & Levels  
Water Conservation  
Springs  
Water Supply Planning  
Water Well Depth Search  
Surplus Lands Program  
Flooding Information & Updates  
FEMA Floodplain Mapping Information  
GIS Data

SEARCH

SHARE RSS PRINT EMAIL

FEATURE CALENDAR

**Governing Board Meeting**  
The District's regular monthly Governing Board meeting will be held on April 8 beginning at 9 a.m. at Tommy Usher Community Center, 506 SW 4th Ave., Chiefland, FL 32626.  
[Agenda](#)  
[Board Materials](#)

**MFLs public hearing**  
A public hearing has been requested on the proposed rule to establish MFLs for the Lower Santa Fe and Ichetucknee Rivers and Associated Priority Springs. The hearing is scheduled for April 3, 2014 at 10 a.m. at the Suwannee River Water Management District, 9225 CR 49, Live Oak FL 32060.  
[More...](#)

**Flood Chart Available**  
Property owners along the Withlacoochee and Little River

**ALERTS & NOTICES**

No-wake rules are in place on the Suwannee River between Little River Spring and Fowler's Bluff, and on the lower Santa Fe River. The DOH lifted its advisory on the Withlacoochee River on March 21 after samples met water quality standards.  
[Read More](#)

**NOTIFICATION SIGN-UP** VIEW ALL

**NEWS & ANNOUNCEMENTS**

**New lawn and landscape irrigation measures are in effect**  
New year-round lawn and landscape irrigation measures went into effect on March 24 for homeowners within the Suwannee River Water Management District's 15-county region. [Additional Info...](#)

**Governor Scott reappoints Alphonso Alexander and Guy Williams to the SRWMD Governing Board**  
Governor Rick Scott announced today the reappointment of

# Regional Flooding

## Georgia Silver Jackets Meeting April 2013

*The Silver Jackets is an innovative program that provides an opportunity to bring together multiple state, federal, and sometimes tribal and local agencies to learn from one another and apply their knowledge to reduce risk.*

### ATTENDEES REPRESENTED

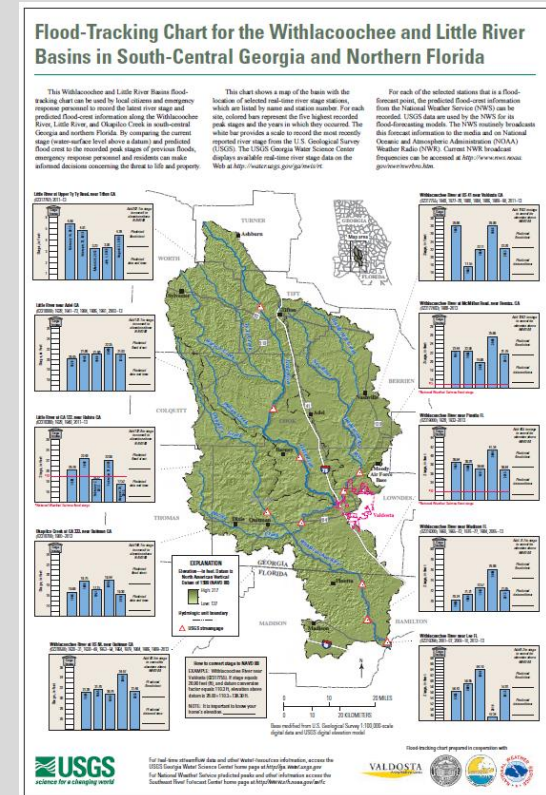
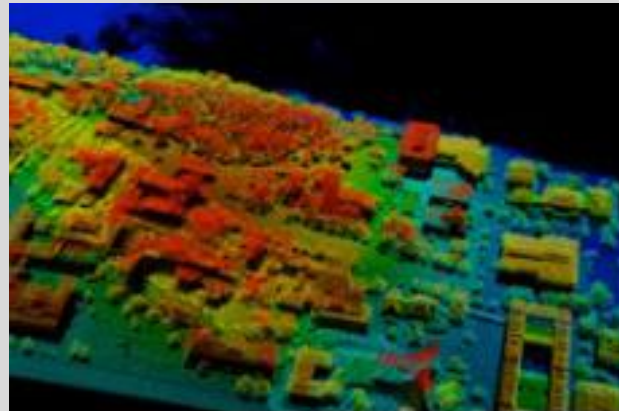
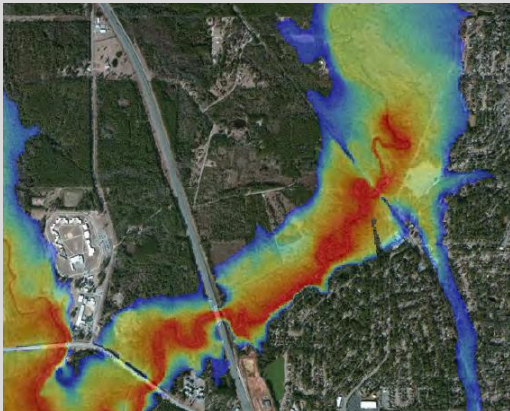
- City of Tifton
- City of Valdosta
- GEMA
- Georgia DNR
- Georgia EPD
- Lowndes County
- Office of Congressman Austin Scott
- Office of Congressman Jack Kingston
- Office of Congressman Sanford Bishop
- Office of Senator Johnny Isakson
- Office of Senator Saxby Chambliss
- Southern Georgia Regional Commission
- Suwannee Satilla Water Planning Council
- Tift County
- USACE (Jacksonville and Savannah offices)
- USGS



# Regional Flooding

## Additional Activities

- U.S. Geological Survey
  - Hosted a Regional Flood Preparedness Meeting June 2013
  - Developed a Flood Tracking Chart February 2014
- National Oceanic and Atmospheric Administration (NOAA)
  - Partner to acquire Light Detection and Ranging (LiDAR)
- Suwannee Satilla Regional Water Planning Council
  - Georgia's State Water Plan - Suwannee Satilla's Water Development & Conservation Plan - available at [www.suwanneesatilla.org](http://www.suwanneesatilla.org)
- U.S. Army Corps of Engineers
  - Finalizing the Withlacoochee River and Sugar Creek Flood Analysis for the City of Valdosta
  - Flooding found to be a **regional issue** and seeking way to evaluate the entire Suwannee Basin



# Any Questions

LARRY HANSON, CITY MANAGER

CITY OF VALDOSTA

P.O. Box 1125

216 E CENTRAL AVE

VALDOSTA, GEORGIA 31603

PHONE: (229) 259-3500

EMAIL: [HANSON@VALDOSTACITY.COM](mailto:HANSON@VALDOSTACITY.COM)

WEBSITE: [WWW.VALDOSTACITY.COM](http://WWW.VALDOSTACITY.COM)